

# Pebble

by Yabu Pushelberg





Pebble is characterised by its soft organic form suitable for any style and environment. The Pebble follows an asymmetrical design with a beautiful play on negative space. Inspired by nature, the partnership between Yabu Pushelberg and Indigenus sought to honour this muse by celebrating the amorphous forms found in nature, translating the soft forms into a family of concrete planters. Despite its size, the pebble contributes in abundance to the look and feel of any natural landscape.

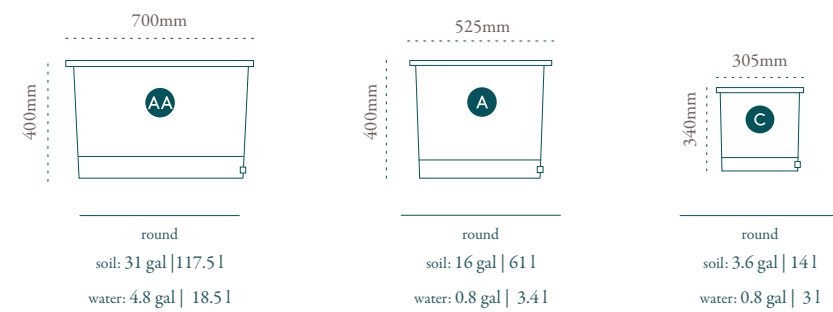
Designed to stand together or independently, the Pebble planters have been crafted to support larger plants and trees.



## SPECIFICATIONS



## LINERS



# Finish Options



*Black*

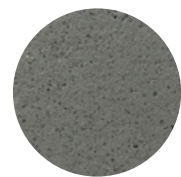
*Sandstone*

*Terracotta*

*White*

*Brown*

*Grey*



*natural wood*



*oiled wood*

# Liners

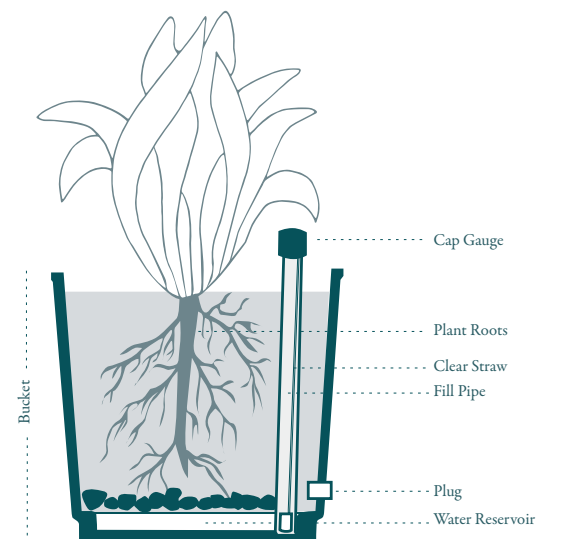


## “Self-Watering” Liners

All Indigenous planters come with a liner for planting. The drawings show the sizes and capacities. These liners have been designed to house plants in proportion to the size of the planters. They contain a water reservoir at the base into which the roots grow. Using the process of “capillary action” the water is pushed up into the soil.

Water levels in the reservoir can be measured using the cap gauge and the liner has a plug which must be removed if the planter is exposed rainfall.

The liners usually need 14 weeks to integrate with the root system during which watering should be done the normal way onto the soil. Thereafter in typical conditions the reservoir only needs filling once or twice a month



**Always use the planter in conjunction with the liner and remove the plug at the base of the liner and the base of the planter if the planters are going to receive rainfall.**

