



Open-Air

R|O|D|A



Tales

Contents

02-41
42-61
62-67

PHILIA
TESEO
BARRIQUE

Design Rodolfo Dordoni
Design AMDL CIRCLE
Design unPizzo

34
70

PHILIA Compositions
Technical Information

RODA News 2025
Open-Air Tales



RODA

PHILIA

SOFA SYSTEM



A name as a tribute, to sanction a deep, affectionate and complicit bond. PHILIA – meaning friendship, considered by the ancient Greeks the highest form of love – is a system of sofas designed by Rodolfo Dordoni, artistic director of RODA for many years.

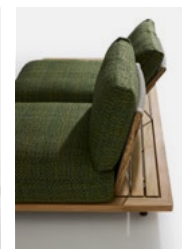
Generous size, modularity and construction details with clear references to world of yachting distinguish PHILIA and make this a project with a flexible and elegant character. Each module in the system features a slatted teak base reminiscent of decks and nautical surfaces: a robust raised platform with a perimeter frame and slats that also act as table tops, alternating with comfortable seats.

Compositions



34

Details



70

Designed by RODOLFO DORDONI

Un nome come tributo, a sancire un legame profondo, affezionato e complice. PHILIA – ossia l'amicizia, considerata dagli antichi Greci la più alta forma di amore – è un sistema di divani firmato da Rodolfo Dordoni, direttore artistico di RODA per molti anni.

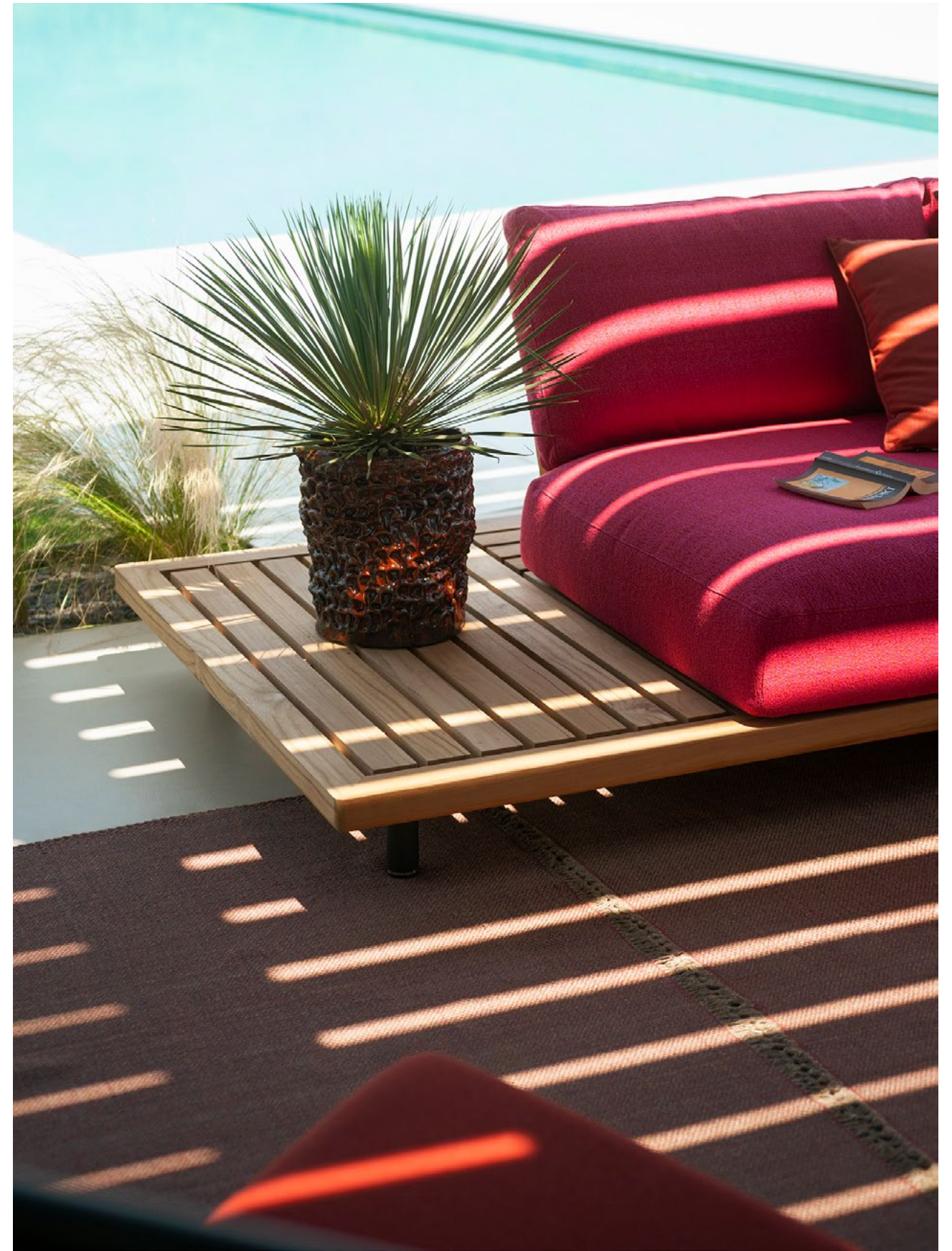
Le dimensioni generose, la componibilità e i dettagli costruttivi che rimandano con raffinatezza al mondo della nautica distinguono PHILIA e lo rendono un progetto dal carattere flessibile ed elegante. Ogni modulo del sistema presenta una base in doghe di teak che si rifà ai ponti e ai rivestimenti nautici: una piattaforma solida e sospesa, costituita da una cornice perimetrale e da listelli che fungono anche da piani di appoggio, alternati alle confortevoli sedute.

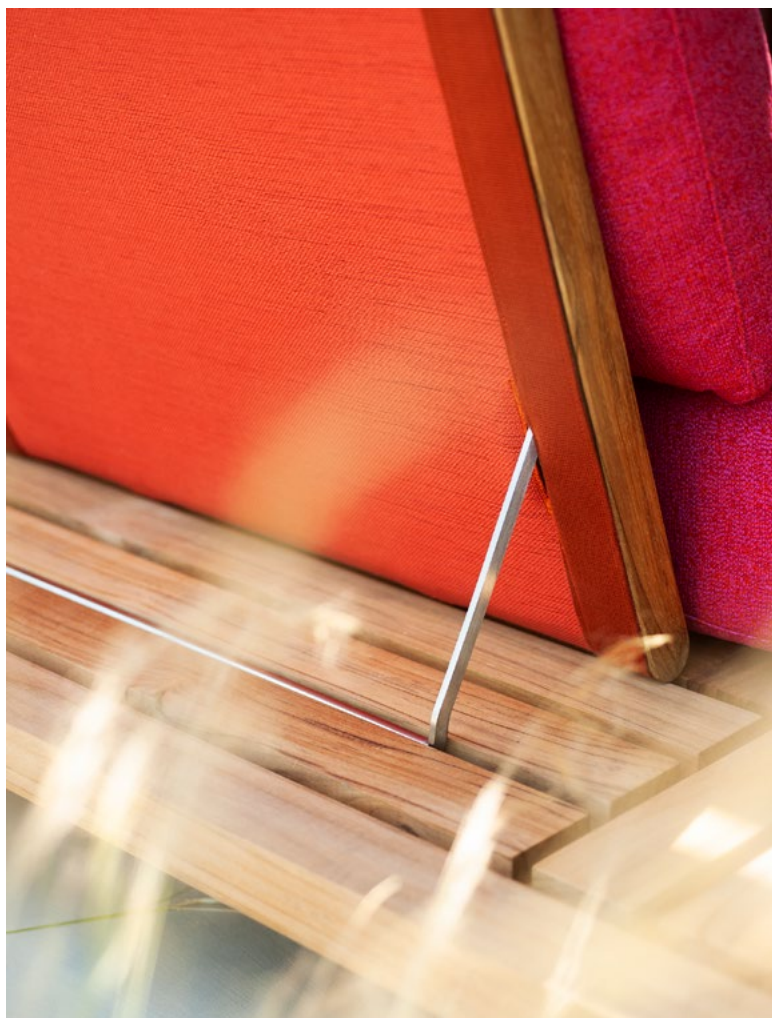




PHILIA sofa composition: 204 2-seater right deck module + 301 3-seater left module + 201 2-seater left module. Finish: structure TEAK. 7 x 101 backrest. Finishes: batyline GINGER + belt ORANGE and TEAK profiles. Fabrics: ALLEGRO U01 Fucsia. Cushions: ALLEGRO U01 Fucsia, BOUQUET Q13 Brick, DEW T57 Rust, SCALA Y01 Peach.

Products match 7 LAZE 002 lounge chair high backrest. Finishes: structure SMOKE, cord ORANGE. ZEFIRO 001 side table and 003 coffee table. Finishes: structure SMOKE, top TEAK. ZEFIRO 002 coffee table. Finishes: structure and top SMOKE. TRIPTYQUE 002 rug. Finish: BRICK





PHILIA sofa composition. Finishes: structure TEAK, backrest batyline GINGER + belt ORANGE and TEAK profiles. Fabric: ALLEGRO U01 Fucsia. Cushions: ALLEGRO U01 Fucsia, BOUQUET Q13 Brick, DEW T57 Rust.





Multiple layouts made possible by the system's modularity; units of different sizes and functions, great comfort, high-quality materials such as teak, Batyline fabrics and belting: PHILIA adopts and applies – in its shapes and its invitation to conviviality – the original philosophy of RODA. For moments of true pleasure and sharing.

Molteplici layout preferiti dalla componibilità, moduli con diverse funzioni e dimensioni, grande comfort, materiali di alta qualità quali teak, Batyline e cinghie: PHILIA riprende e applica – nelle sue forme e nel favorire la convivialità – la filosofia originaria di RODA. Per momenti di vera piacevolezza e condivisione.





PHILIA 401 1-seater left chaise longue. Finish: structure TEAK. PHILIA 101 backrest. Finishes: batyline and belt SAND, TEAK profiles. Fabric: BOUQUET Q12 Sand.







PHILIA sofa composition: PHILIA 301 3-seater left module + 401 1-seater left chaise longue + 900 coffee table. Finish: structure TEAK, 4 x PHILIA 101 backrest. Finishes: batyline and belt SAND, TEAK profiles. Fabric: BOUQUET Q12 Sand. Cushions: PARK K01 Sand, OXFORD G01 Mole, PARK K08 White.





PHILIA's back and armrests are lightly padded and can recline in three positions, while increasing the possible variations. The armrest can also be used as a backrest or headrest: formal versatility, relaxation and utter comfort.

Gli schienali e i braccioli di PHILIA sono leggermente imbottiti e reclinabili in tre posizioni, caratteristica che aumenta le possibili configurazioni. Il bracciolo, infatti, può fungere anche da schienale o da poggiatesta: poliedricità formale, relax e grande comfort.



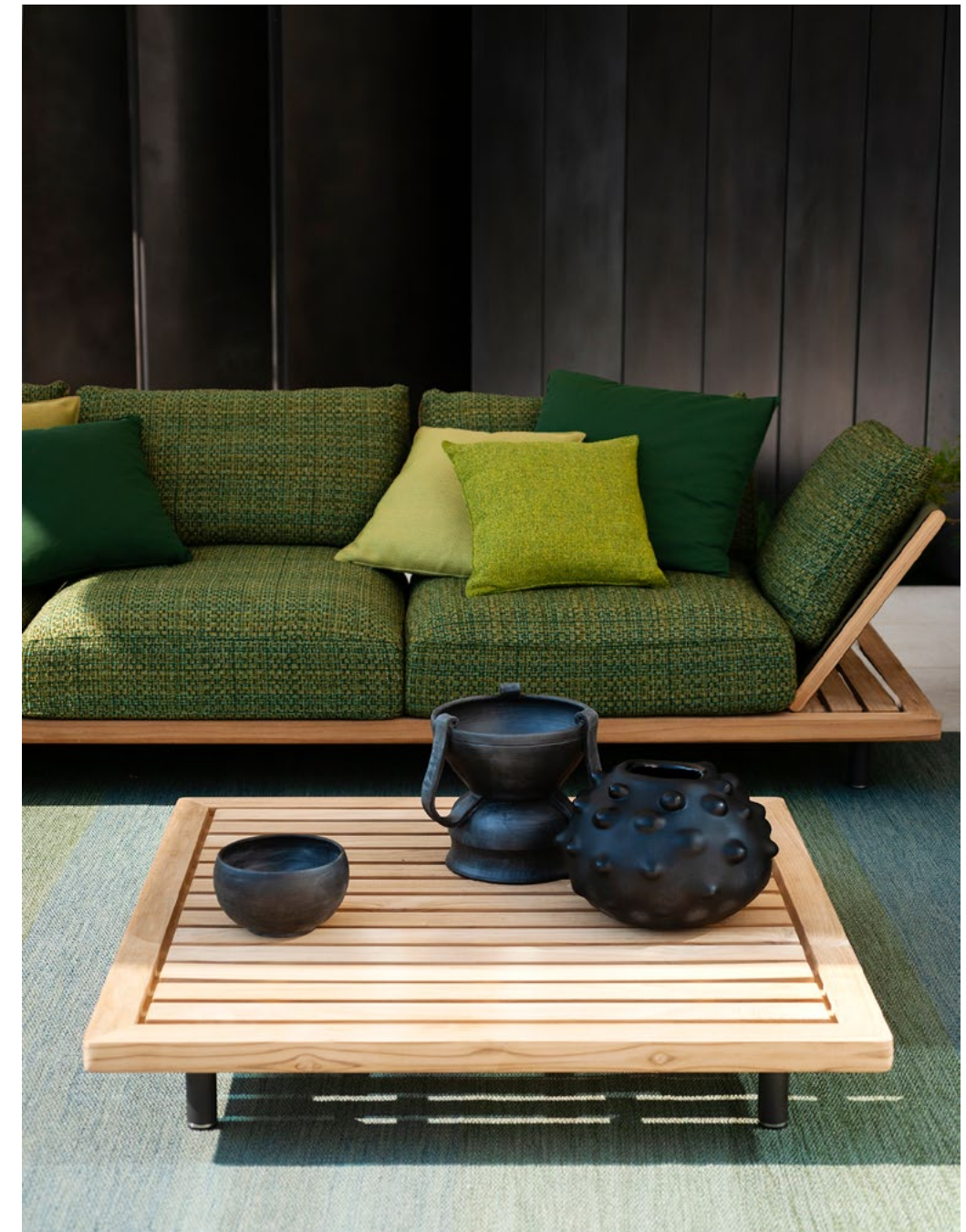
PHILIA 310 3-seater module, PHILIA 900 coffee table. Finish: structure TEAK. 5 x PHILIA 101 backrest. Finishes: batyline and belt OLIVE, TEAK profiles. Fabric: BOUQUET Q14 Grass. Cushions: DEW T45 Lime, SCALA Y02 Oil, ALLEGRO U02 Grass.





PHILIA sofa composition: PHILIA 301 3-seater module, 900 coffee table. Finish: structure TEAK. 5 x PHILIA 101 backrest. Finishes: batyline and belt OLIVE, TEAK profiles. Fabric: BOUQUET Q14 Grass. Cushions: DEW T45 Lime, SCALA Y02 Oil, ALLEGRO U02 Grass.

Products match 7 ASTRA 001 lounge chair. Finishes: structure SMOKE, cord OLIVE. Fabric: SCALA Y02 Oil. DOUBLE 032 pouf. Fabric: ALLEGRO U02 Grass. BUTTON 045 side table. Finish: structure and top SMOKE. TINT 002 rug. Finish: BLUEEN. BARRIQUE 002 planter. Finishes: structure IROKO, belt BROWN, cord TOBACCO.











PHILIA Compositions

Modules

PHILIA 401
1-seater left chaise longue
PHILIA 301
3-seater left module
Finish: structure TEAK

3 × PHILIA 101
backrest
Finishes: batyline and belts
SAND, TEAK profiles

Fabric:
BOUQUET Q12 Sand



Finely proportioned, welcoming and softly cushioned, with harmonious shapes and a wide colour range; flexible in terms of function, setting and use: PHILIA is a system with timeless appeal and great potential.

Finemente proporzionato, accogliente e provvisto di morbidi cuscini, armonico nei profili, dall'ampia gamma cromatica nei rivestimenti, flessibile nelle funzioni e nei contesti di ambientazione e utilizzo, PHILIA è un sistema dall'appeal senza tempo e dal grande potenziale.



Modules

PHILIA 900
coffee table
PHILIA 301
3-seater left module
PHILIA 202
2-seater right module
Finish: structure TEAK

4 × PHILIA 101
backrest
Finishes: batyline and belts
SAND, TEAK profiles

Fabric:
BOUQUET Q12 Sand

Modules

PHILIA 204
2-seater right deck module
PHILIA 310
3-seater sofa module
Finish: structure TEAK

5 × PHILIA 101
backrest
Finishes: batyline and belts
SAND, TEAK profiles

Fabric:
BOUQUET Q12 Sand

The modular grating – a wooden grille typically used in yachts – is the distinctive element of PHILIA's design: it is the core of its supporting structure, ranging from the coffee table to the chairs and sofa, with more generous dimensions for the chaise longue unit.



Modules

PHILIA 204
2-seater right deck module
PHILIA 401
1-seater left chaise longue
Finish: structure TEAK

3 × PHILIA 101
backrest
Finishes: batyline and belts
SAND, TEAK profiles

Fabric:
BOUQUET Q12 Sand

Modules

PHILIA 302
3-seater right module
Finish: structure TEAK

Fabric:
BOUQUET Q14 Grass

3 × PHILIA 101
Finishes: batyline and belts
OLIVE, TEAK profiles



Modules

PHILIA 302
3-seater right module
Finish: structure TEAK

Fabric:
BOUQUET Q14 Grass

3 × PHILIA 101
Finishes: batyline and belts
OLIVE, TEAK profiles

PHILIA 900
coffee table
Finish: structure TEAK



Il carabottino, ossia il grigliato di legno tipicamente impiegato nell'ambito nautico, è l'elemento distintivo del design di PHILIA: è l'anima della sua struttura portante e si sviluppa dal tavolino alle sedute e al divano, fino a raggiungere dimensioni più generose per il modulo dedicato alla chaise longue.

PHILIA 302
3-seater right module
PHILIA 204
2-seater right deck module
Finish: structure TEAK

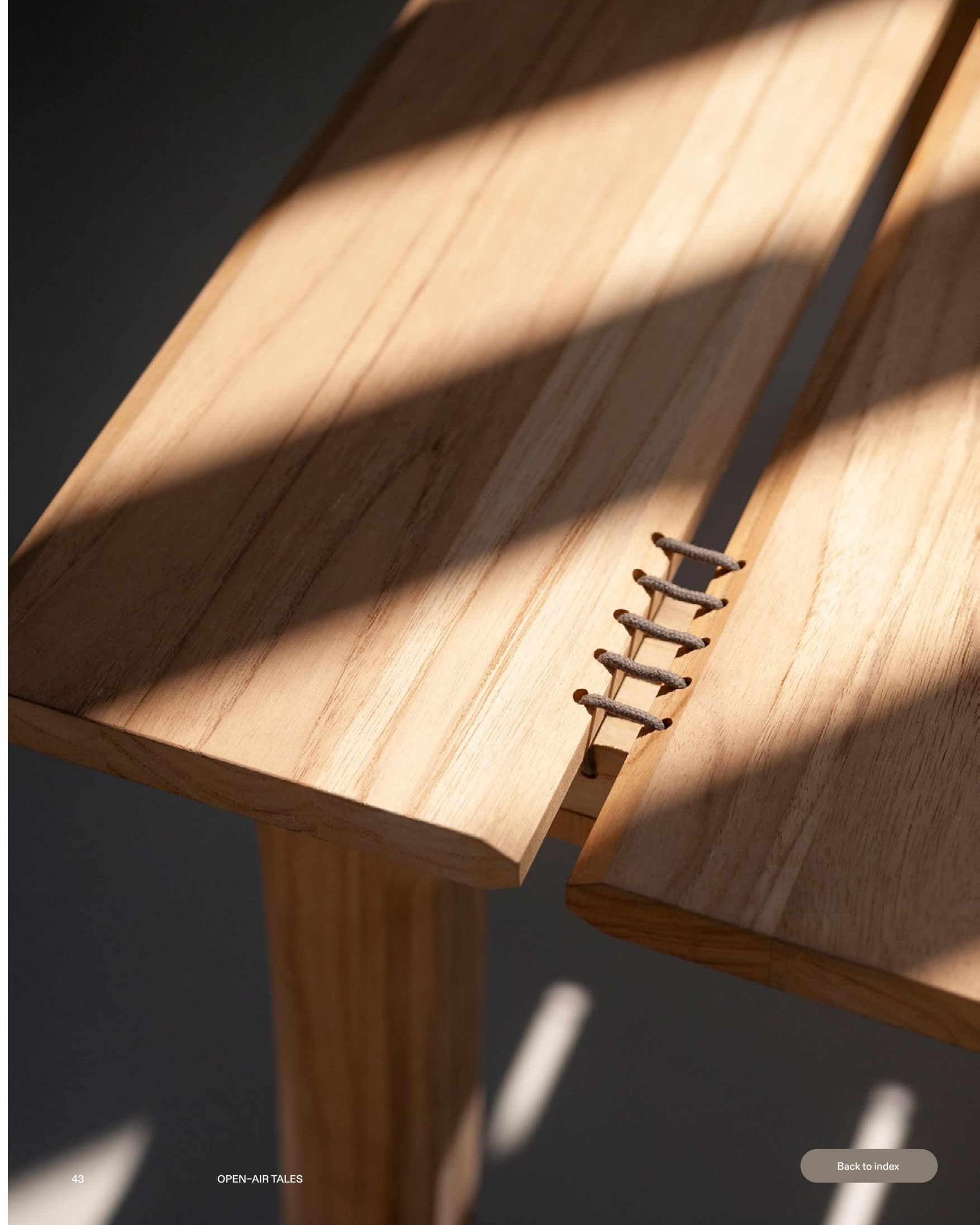
5 x PHILIA 101
backrest
Finishes: batyline
GINGER and belt ORANGE,
TEAK profiles

Fabric: ALLEGRO U01 Fucsia
Cushions: ALLEGRO U01
Fucsia, BOUQUET Q13 Brick



TESEO

TABLE AND CHAIR



Fine craftsmanship and industrial efficiency combine to create an original dining collection designed by AMDL CIRCLE, the studio founded by Michele De Lucchi.

The characteristic feature of TESEO is the cord stitching joining the teak slats that make up both the table top and the chair: a sartorial process and detail that are a stylistic motif of the designer and whose result stands out among RODA's proposals. The table and chair showcase the design solution of "sewing wood": the former displays meticulous balance between the sewn slats of the seat and the sinuous turned legs, while the seat itself has faceted sides and continuous stitching on all its slats.

Details



71

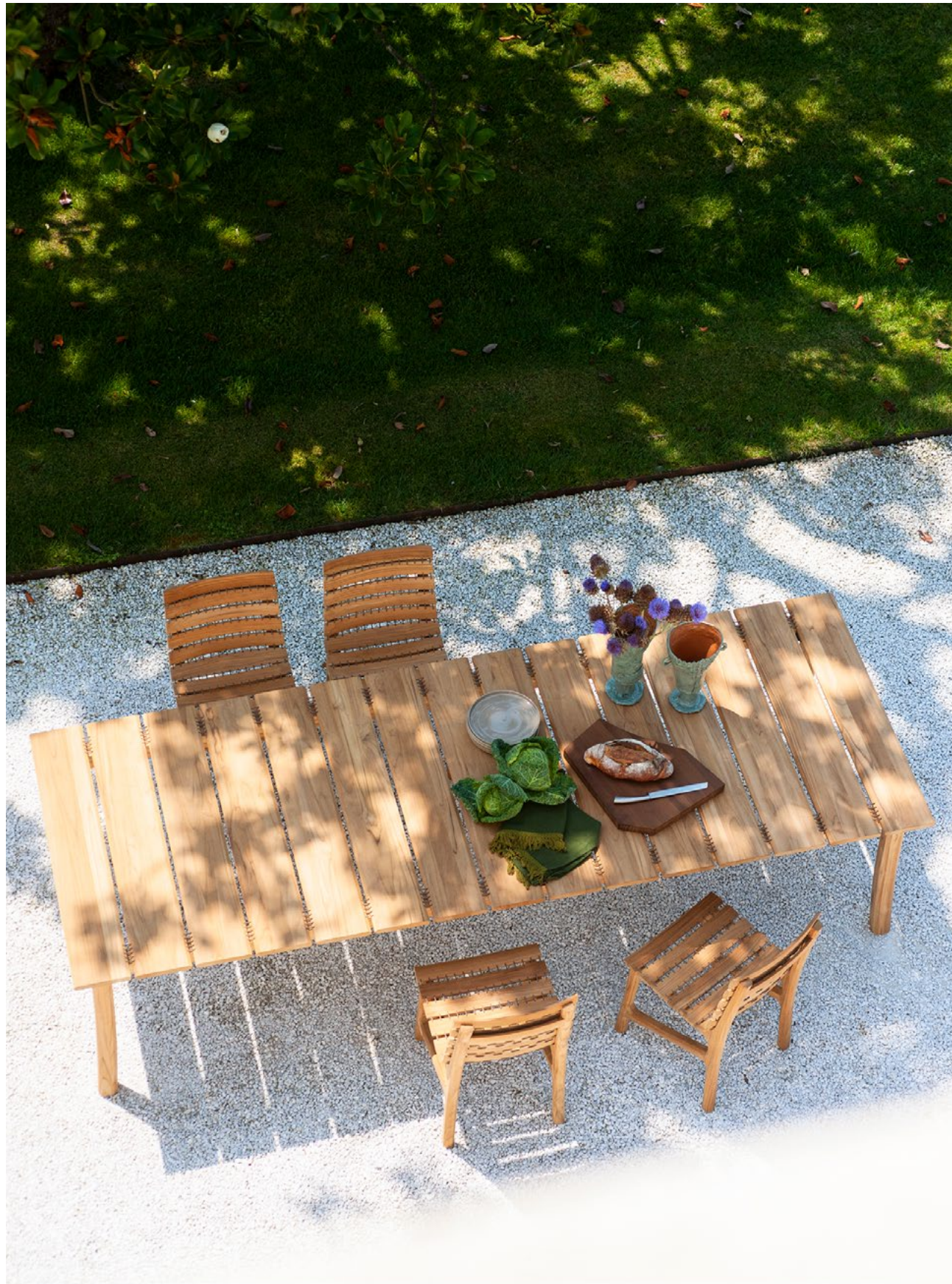
Designed by AMDL CIRCLE

Alta artigianalità ed efficienza industriale, insieme, danno vita a una originale collezione dining progettata da AMDL CIRCLE, lo studio fondato da Michele De Lucchi.

Il tratto caratteristico di TESEO è una cucitura di corde che unisce tra loro i listelli di teak componenti sia il piano del tavolo sia la seduta: un processo e un dettaglio sartoriali che sono cifra stilistica dell'autore e il cui risultato spicca tra le proposte di RODA. Il tavolo e la sedia enfatizzano la soluzione progettuale del "cucire il legno": il primo rivela un attento equilibrio tra le doghe cucite del piano e le gambe sinuose e tornite, mentre la seduta, dai fianchi sfaccettati, presenta una cordatura continua tra i suoi listelli.









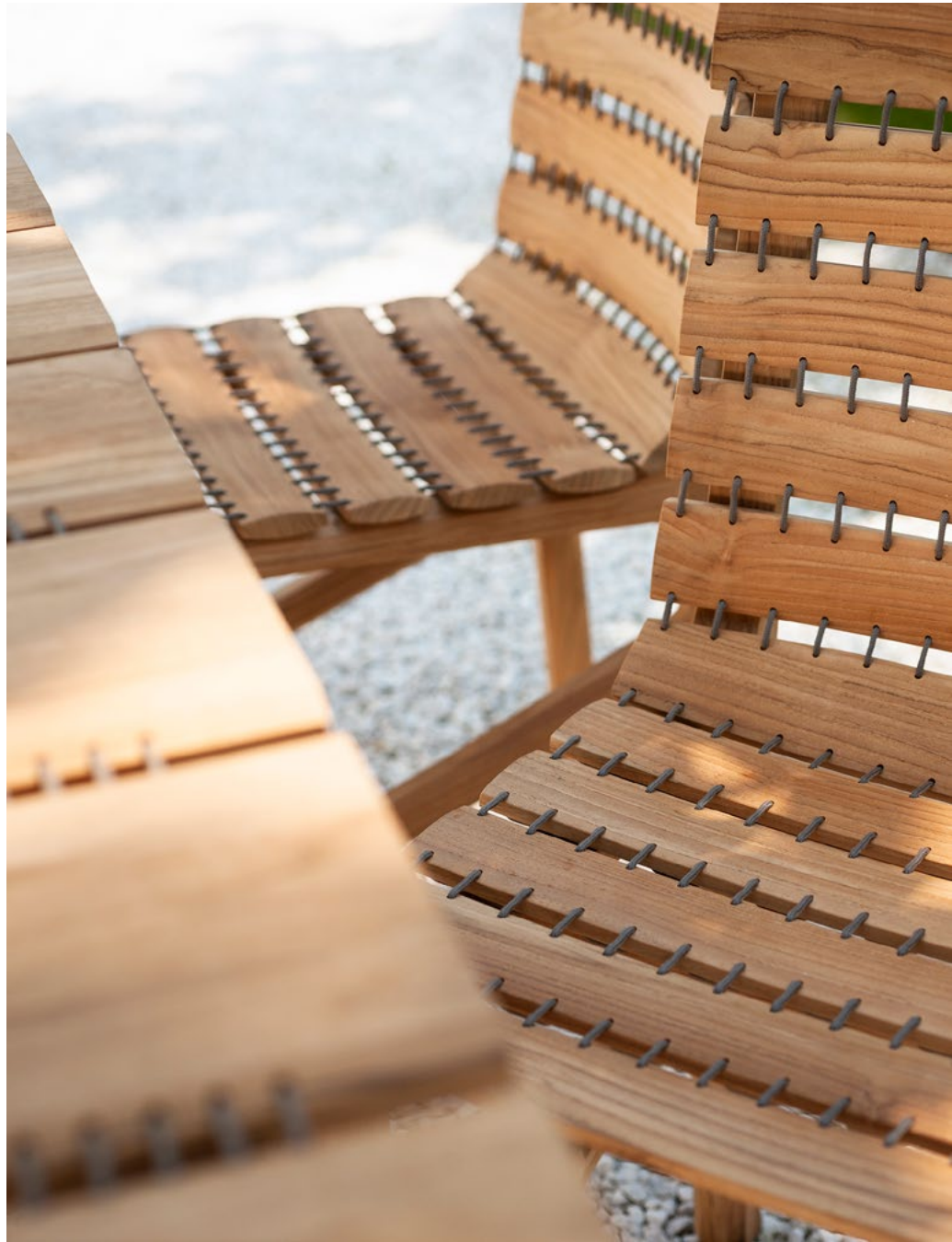


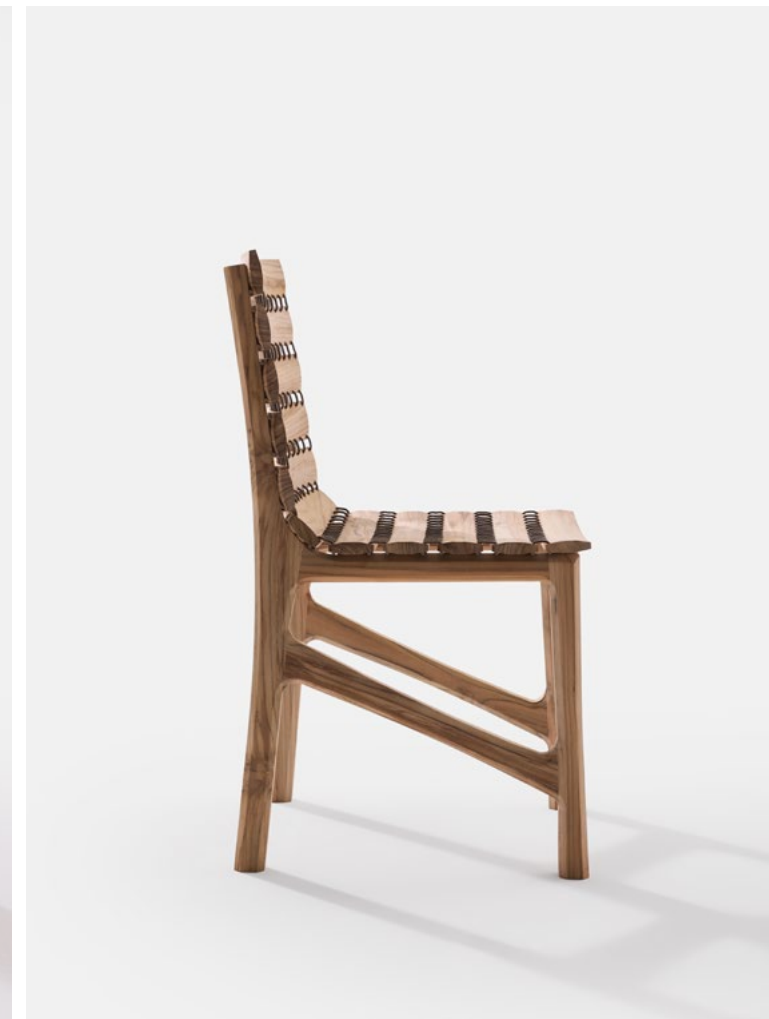


Wooden warp and fabric weft blend experimentation and seriality, craftsmanship and industrial process. The TESEO collection is stunning in concept and technique, giving rise to a combination of shapes and materials that enhance the nature of teak and invite you to enjoy its refined functionality.



Orditi lignei e trame tessili tra sperimentazione e serialità, tra artigianalità e processo industriale. La collezione TESEO stupisce per concept e tecnica realizzativa, in un connubio di forme e materie che esaltano l'essenza del teak e invitano a goderne la funzionalità raffinata.





BARRIQUE

PLANTERS



BARRIQUE 002 planter. Finishes: structure IROKO, belt BROWN, cord TOBACCO.
BARRIQUE 103 planter. Finishes: structure IROKO, belt TOBACCO, cord BROWN.
BARRIQUE 101 planter. Finishes: structure IROKO, belt and cord TOBACCO.

Wooden slats, cords and belts combine to create elegant new surfaces, designed for RODA by unPizzo, a research studio specialising in the creation of weaves for furniture.

In the various BARRIQUE formats, iroko wood becomes an unexpected texture and belting creates a pattern completed by the fine cordage that outlines diamonds on the entire surface of the cylinder. Structure and decoration thus become a whole made of different materials, with the wood discovering a new form and role in this finely crafted accessory.

Details



71

Designed by unPizzo

Listelli di legno, corde e cinghie si uniscono per creare dei coprivasi inediti ed eleganti, ideati per RODA da unPizzo, studio e laboratorio specializzato nella realizzazione di intrecci per l'arredamento.

Nei diversi formati di BARRIQUE, il legno di iroko si fa trama inaspettata e le fasce, come ordito, generano un pattern completato dalla sottile cordatura che definisce dei rombi sull'intera superficie del cilindro. Struttura e decoro sono dunque un tutt'uno composto dai diversi materiali, con l'essenza lignea che scopre una forma e un ruolo nuovi in questo complemento finemente artigianale.



An original, rigorous and joyful aesthetic, in which wood becomes capable of generating a foldable yet resistant “fabric”, solid and functional. BARRIQUE planters are available in three sizes, with narrow or wide slats complemented by belting and cordage, in a continuation of RODA’s formal language. The fabric elements come in a wide range of colour combinations: solid colour, tone on tone or in two contrasting colours, chosen from the catalogue range.

Un'estetica originale, rigorosa e allegra, in cui il legno diventa materiale in grado di generare un “tessuto” pieghevole e resistente, solido e funzionale. I coprivasi BARRIQUE si presentano in tre dimensioni, con doghe strette oppure larghe e cinghie e corde a complemento, in continuità con il linguaggio formale di RODA. Tante le possibili combinazioni cromatiche degli elementi tessili: in tinta unita, tono su tono o con due colori a contrasto, a scelta nella gamma a catalogo.



BARRIQUE 101 planter. Finishes: structure IROKO, belt SAND, cord GREY.



DETAILS

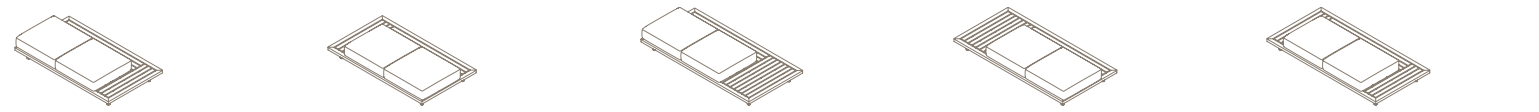
TECHNICAL INFORMATION



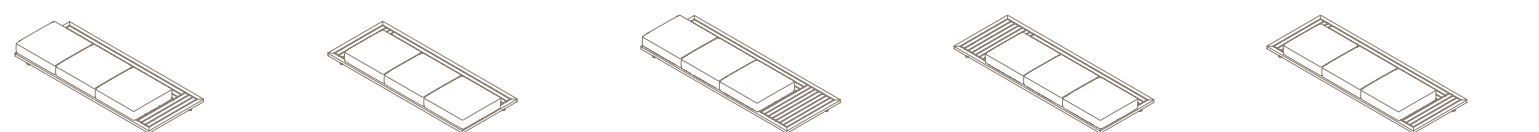
PHILIA

→ View product

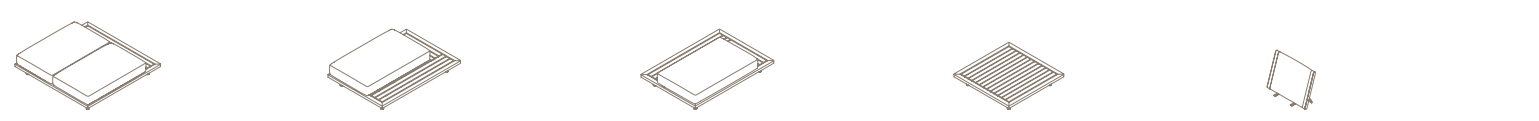
<p>201 2-SEATER LEFT MODULE</p> <p>W 198 x D 115 x H 20 cm Seat with cushion H 35 cm</p> <p>W 77" 7/8 x D 45" 1/4 x H 7" 7/8 Seat with cushion H 13" 3/4</p>	<p>202 2-SEATER RIGHT MODULE</p> <p>W 198 x D 115 x H 20 cm Seat with cushion H 35 cm</p> <p>W 77" 7/8 x D 45" 1/4 x H 7" 7/8 Seat with cushion H 13" 3/4</p>	<p>203 2-SEATER LEFT DECK MODULE</p> <p>W 230 x D 115 x H 20 cm Seat with cushion H 35 cm</p> <p>W 90" 1/2 x D 45" 1/4 x H 7" 7/8 Seat with cushion H 13" 3/4</p>	<p>204 2-SEATER RIGHT DECK MODULE</p> <p>W 230 x D 115 x H 20 cm Seat with cushion H 35 cm</p> <p>W 90" 1/2 x D 45" 1/4 x H 7" 7/8 Seat with cushion H 13" 3/4</p>	<p>210 2-SEATER SOFA MODULE</p> <p>W 230 x D 115 x H 20 cm Seat with cushion H 35 cm</p> <p>W 90" 1/2 x D 45" 1/4 x H 7" 7/8 Seat with cushion H 13" 3/4</p>
---	--	--	---	---



<p>301 3-SEATER LEFT MODULE</p> <p>W 281 x D 115 x H 20 cm Seat with cushion H 35 cm</p> <p>W 110" 5/8 x D 45" 1/4 x H 7" 7/8 Seat with cushion H 13" 3/4</p>	<p>302 3-SEATER RIGHT MODULE</p> <p>W 281 x D 115 x H 20 cm Seat with cushion H 35 cm</p> <p>W 110" 5/8 x D 45" 1/4 x H 7" 7/8 Seat with cushion H 13" 3/4</p>	<p>303 3-SEATER LEFT DECK MODULE</p> <p>W 313 x D 115 x H 20 cm Seat with cushion H 35 cm</p> <p>W 123" 1/4 x D 45" 1/4 x H 7" 7/8 Seat with cushion H 13" 3/4</p>	<p>304 3-SEATER RIGHT DECK MODULE</p> <p>W 313 x D 115 x H 20 cm Seat with cushion H 35 cm</p> <p>W 123" 1/4 x D 45" 1/4 x H 7" 7/8 Seat with cushion H 13" 3/4</p>	<p>310 3-SEATER SOFA MODULE</p> <p>W 313 x D 115 x H 20 cm Seat with cushion H 35 cm</p> <p>W 123" 1/4 x D 45" 1/4 x H 7" 7/8 Seat with cushion H 13" 3/4</p>
--	---	---	--	--



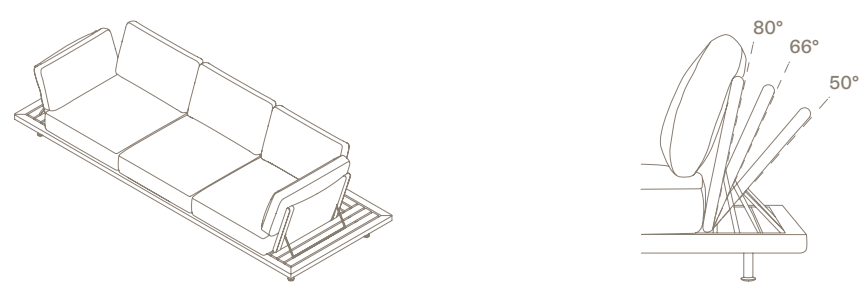
<p>400 2-SEATER CENTRAL CHAISE LONGUE</p> <p>W 166 x D 166 x H 20 cm Seat with cushion H 35 cm</p> <p>W 65" 1/2 x D 65" 1/2 x H 7" 7/8 Seat with cushion H 13" 3/4</p>	<p>401 1-SEATER LEFT CHAISE LONGUE</p> <p>W 166 x D 115 x H 20 cm Seat with cushion H 35 cm</p> <p>W 65" 1/2 x D 45" 1/4 x H 7" 7/8 Seat with cushion H 13" 3/4</p>	<p>402 1-SEATER RIGHT CHAISE LONGUE</p> <p>W 166 x D 115 x H 20 cm Seat with cushion H 35 cm</p> <p>W 65" 1/2 x D 45" 1/4 x H 7" 7/8 Seat with cushion H 13" 3/4</p>	<p>900 COFFEE TABLE</p> <p>W 115 x D 115 x H 20 cm</p> <p>W 45" 1/4 x D 45" 1/4 x H 7" 7/8</p>	<p>101 BACKREST/ARMREST</p> <p>W 69 x D 17 x H 53 cm</p> <p>W 27" x D 6" 3/4 x H 20" 7/8</p>
---	--	---	---	---



DETAILS

The backrest/armrest is reclining in 3 positions and can be positioned on the module deck at each seat.

Lo schienale/bracciale è reclinabile in 3 posizioni e può essere posizionato sul deck dei moduli in corrispondenza di ogni seduta.



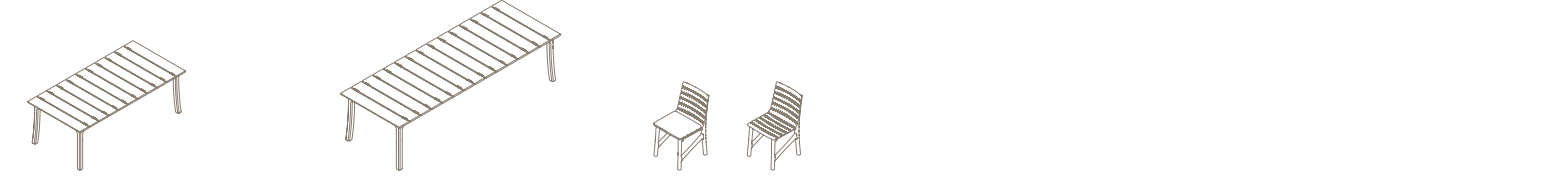
<p>Structure</p> <p>Teak</p>	<p>Feet</p> <p>Smoke</p>
-------------------------------------	---------------------------------

Batylane + Belt						
Grey + Grey	Sand + Sand	Brown + Brown	Olive + Olive	Sky + Sky	Navy + Blue	Ginger + Orange

TESEO

→ View product

<p>220 TABLE</p> <p>W 222 x D 110 x H 76 cm Under the top H 66 cm</p> <p>W 87" 3/8 x D 43" 1/4 x H 29" 7/8 Under the top H 26"</p>	<p>300 TABLE</p> <p>W 303 x D 110 x H 76 cm Under the top H 66 cm</p> <p>W 119" 1/2 x D 43" 1/4 x H 29" 7/8 Under the top H 26"</p>	<p>049 CHAIR + CUSHION</p> <p>W 45 x D 54 x H 84 cm Seat with cushion H 49 cm</p> <p>W 17" 3/4 x D 21" 1/4 x H 33" 1/4 Seat with cushion H 19" 3/8</p>
---	--	---



<p>Structure</p> <p>Teak</p>	<p>Cord</p> <p>Mole</p>
-------------------------------------	--------------------------------

BARRIQUE

→ View product

<p>001 PLANTER</p> <p>Ø 44 x H 40 cm</p> <p>Ø 17" 3/8 x H 15" 3/4</p>	<p>002 PLANTER</p> <p>Ø 64 x H 50 cm</p> <p>Ø 25" 1/4 x H 19" 3/4</p>	<p>003 PLANTER</p> <p>Ø 79 x H 62 cm</p> <p>Ø 31" 1/8 x H 24" 1/2</p>
--	--	--



<p>101 PLANTER</p> <p>Ø 44 x H 40 cm</p> <p>Ø 17" 3/8 x H 15" 3/4</p>	<p>102 PLANTER</p> <p>Ø 64 x H 50 cm</p> <p>Ø 25" 1/4 x H 19" 3/4</p>	<p>103 PLANTER</p> <p>Ø 79 x H 62 cm</p> <p>Ø 31" 1/8 x H 24" 1/2</p>
--	--	--



<p>Slats</p> <p>Iroko Natural</p>	<p>Belts + Cords</p> <p>Grey</p> <p>Sand</p> <p>Brown</p> <p>Tobacco</p> <p>Olive</p> <p>Sky</p> <p>Blue</p> <p>Orange</p>							
--	---	--	--	--	--	--	--	--

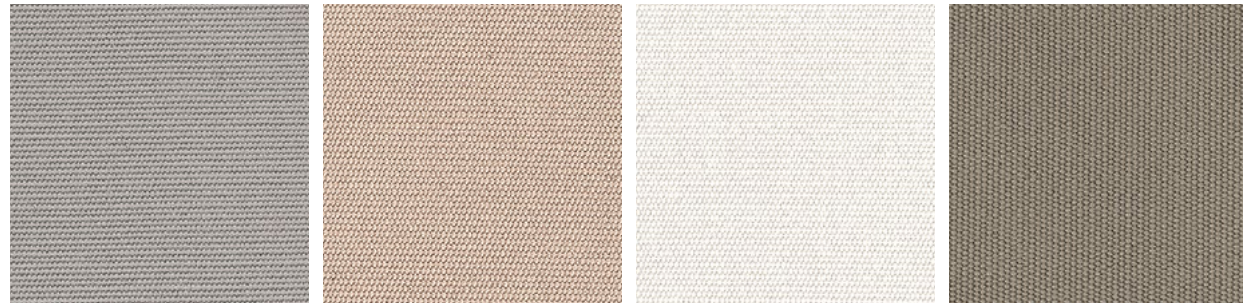
<p>Recycled Belts + Cords</p> <p>Clay</p> <p>Mint</p> <p>Rose</p> <p>Stone</p> <p>Teal</p>					<p>Bicolor</p> <p>Grey + Sand</p> <p>Brown + Tobacco</p> <p>Blue + Olive</p> <p>Orange + Rose</p> <p>Mint + Teal</p>				
---	--	--	--	--	---	--	--	--	--

<p>Bicolor</p> <p>Stone + Clay</p> <p>Sand + Grey</p> <p>Tobacco + Brown</p> <p>Olive + Blue</p> <p>Rose + Orange</p> <p>Teal + Mint</p> <p>Clay + Stone</p>						
---	--	--	--	--	--	--

Back to index

DEW

Cat. 1 – Hydro 1
100% Acrylic

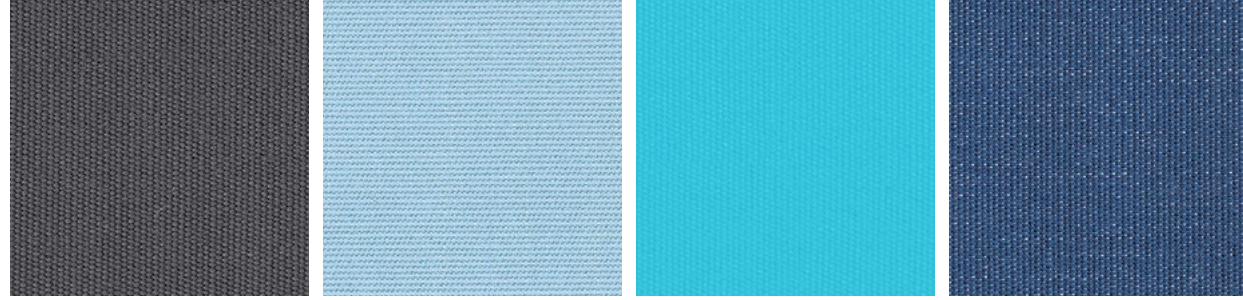


Dew T27 Steel

Dew T28 Sand

Dew T31 White

Dew T36 Mole

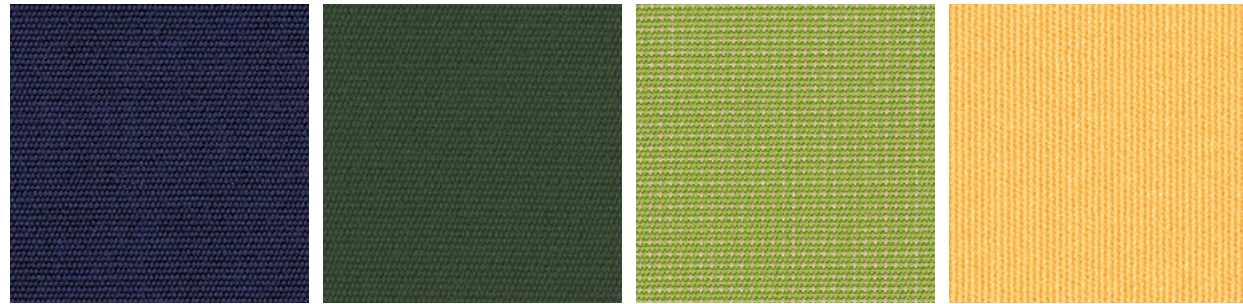


Dew T37 Gun

Dew T43 Sky

Dew T49 Turquoise

Dew T58 Denim



Dew T59 Navy

Dew T45 Lime

Dew T44 Kiwi

Dew T47 Lemon

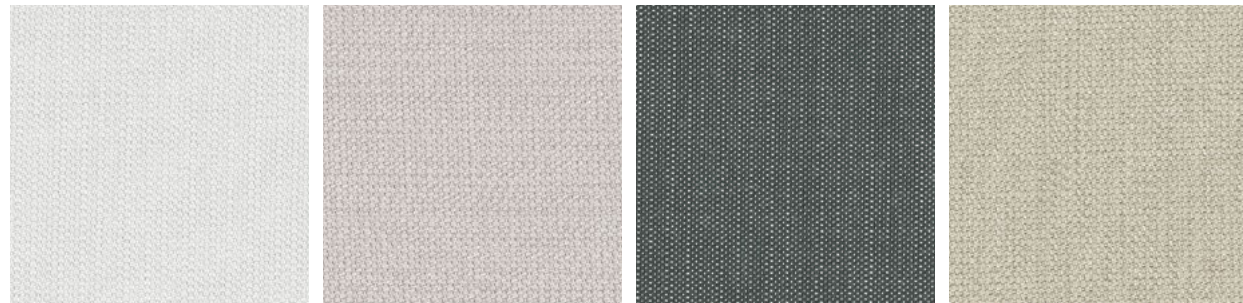


Dew T48 Orange

Dew T57 Rust

SHORE

Cat. 1 – Hydro 1
100% Acrylic

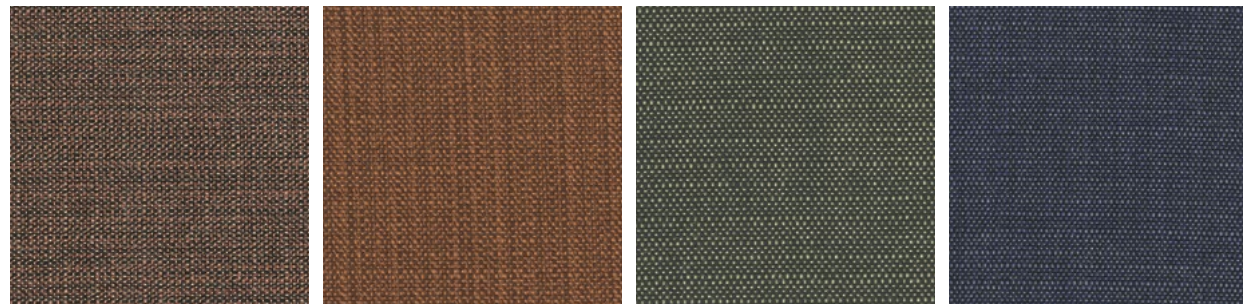


Shore S21 White

Shore S25 Steel

Shore S26 Stone

Shore S23 Sand



Shore S28 Nut

Shore S33 Rust

Shore S35 Olive

Shore S36 Navy

ECO (Recycled)

Cat. 1 – Hydro 1
50% Recycled Acrylic
47% Acrylic
3% Polyester

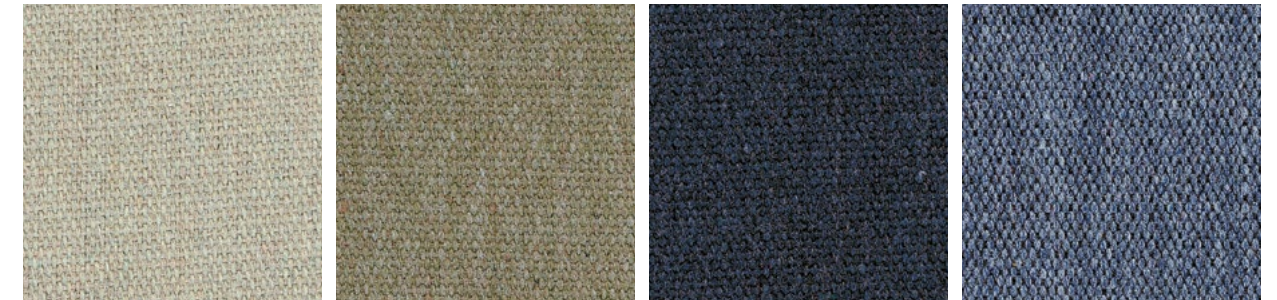


Eco C01 Graphite

Eco C02 Stone

Eco C03 Sand

Eco C04 Rust



Eco C05 Mint

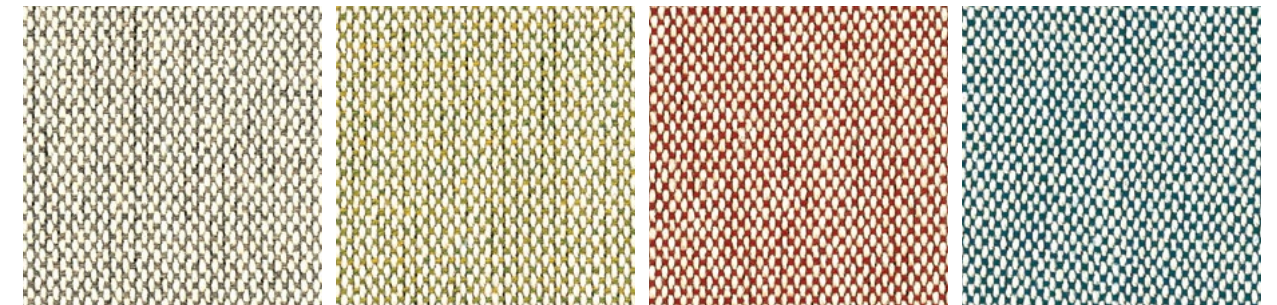
Eco C06 Grass

Eco C07 Navy

Eco C08 Denim

OXFORD

Cat. 2 – Hydro 2
100% Acrylic



Oxford G01 Mole

Oxford G02 Kiwi

Oxford G03 Rust

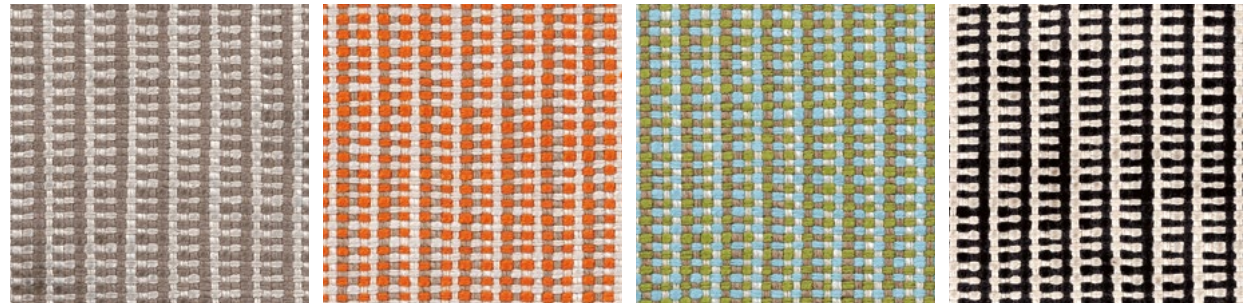
Oxford G04 Peacock



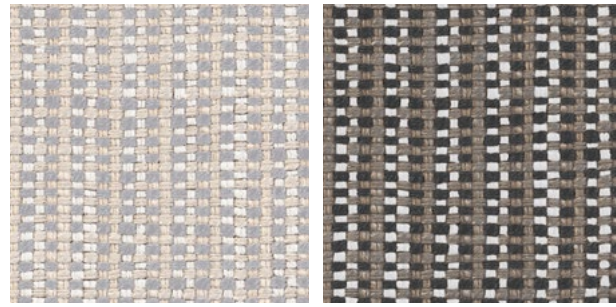
Oxford G05 Black

LANE

Cat. 2 – Hydro 2
99% Acrylic
1% Polyamide



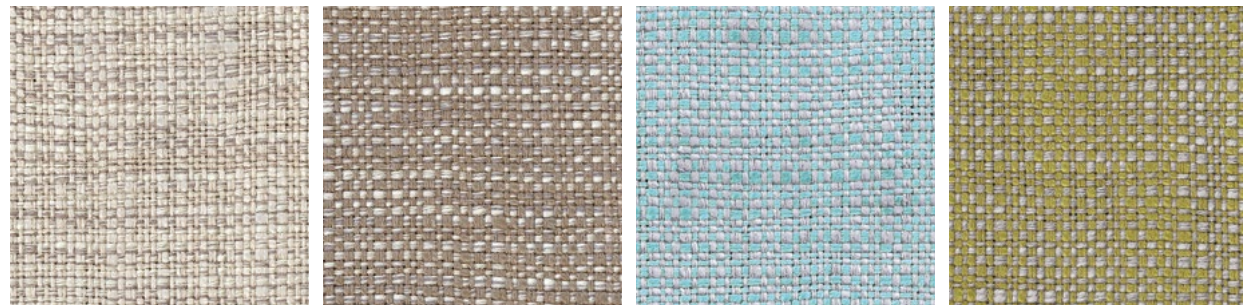
Lane L01 Mole/Sand Lane L02 Curry/Sand Lane L03 Grass/Sky Lane L05 Black/Sand



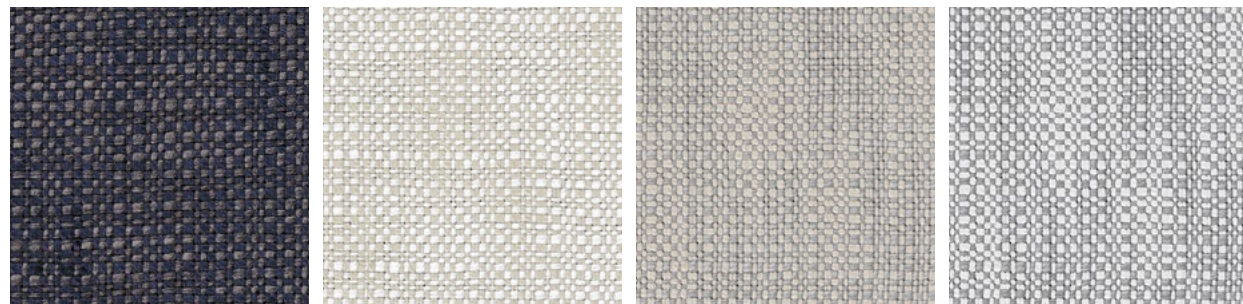
Lane L09 Steel/Sand Lane L10 Stone/Mole

PARK

Cat. 2 – Hydro 2
99% Acrylic
1% Polyamide



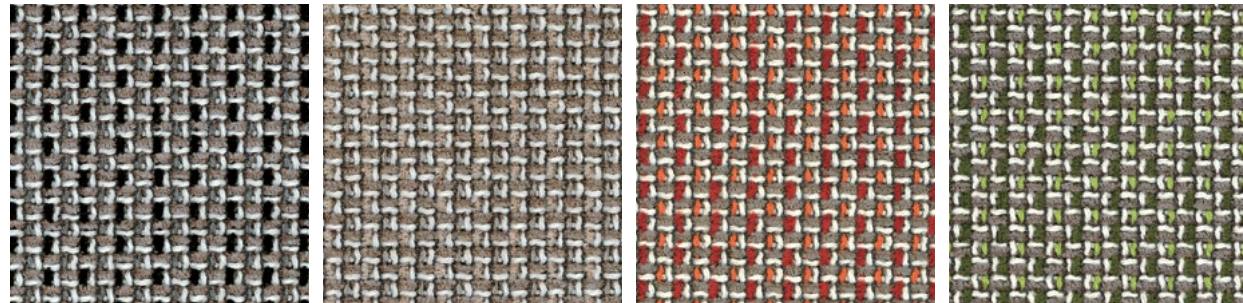
Park K01 Sand Park K02 Mole Park K04 Sky Park K05 Grass



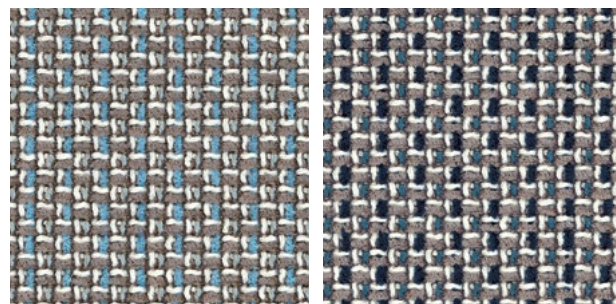
Park K06 Navy Park K08 White Park K09 Steel Park K12 Ice

DOMINO

Cat. 2 – Hydro 2
90% Acrylic
10% Polyester



Domino M01 Grey Domino M02 Sand Domino M03 Rust Domino M04 Grass



Domino M05 Sky Domino M06 Blue

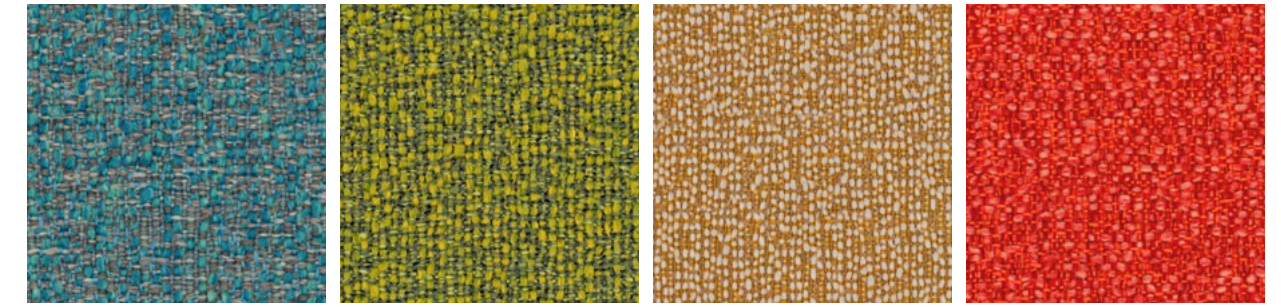
NEW

ALLEGRO

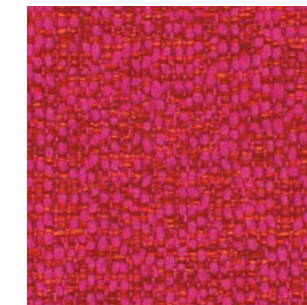
Cat. 2 – Hydro 2
50% recycled
polypropylene
50% polypropylene



Allegro U07 White Allegro U03 Sand Allegro U08 Mole Allegro U09 Steel



Allegro U04 Peacock Allegro U02 Grass Allegro U06 Wheat Allegro U05 Orange



Allegro U01 Fucsia

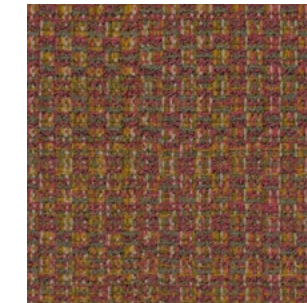
NEW

BOUQUET

Cat. 2 – Hydro 2
100% polypropylene



Bouquet Q11 White Bouquet Q12 Sand Bouquet Q15 Blue Bouquet Q14 Grass



Bouquet Q13 Brick

NEW

SCALA

Cat. 2 – Hydro 2
100% recycled
polyethylene



Scala Y01 Peach Scala Y02 Oil Scala Y03 Peacock

Art direction
and graphic design
Multi Form
Photography
Andrea Ferrari
Post production
Erica Fadini
Still life photography
Omar Sartor
Styling
Sara Dassi
Writing
Elisa Testori

Acknowledgments
Ceramicah
Ceramiche Paolo Santangelo
Chiara Berta
Daria Dazzan Handmade Ceramic
KnIndustrie
Michela Cattai
Once Milano
Stilleben
The House of Lyria
Vasaio Damiano Groppi

Ask for our
FSC® certified products
Richiedi i nostri
prodotti certificati FSC®



RODA SRL

via Tinella 2
21026 Gavirate (VA) Italy
T. +39 0332 74 86
contact@rodaonline.com
rodaonline.com

R O D A

