

Fin-
ishes

Indoor



articolo ignifugo
flame retardant

FAGGIO TINTO
STAINED BEECH



BV
Anilina Beige
Beige Aniline

UD
Biscotto
Biscuit

TM
Moka
Moka



TZ
Grigio Plumbeo
Dark Grey

TT
Wengé
Wengé

15
Carbone
Carbon

FRASSINO TINTO
STAINED ASH



SG
Anilina Beige
Beige Aniline

SC
Biscotto
Biscuit

HJ
Moka
Moka

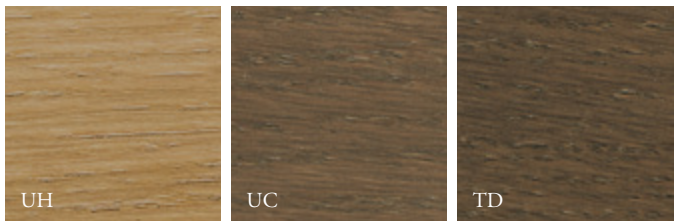


HK
Grigio Plumbeo
Dark Grey

HL
Wengé
Wengé

HP
Carbone
Carbon

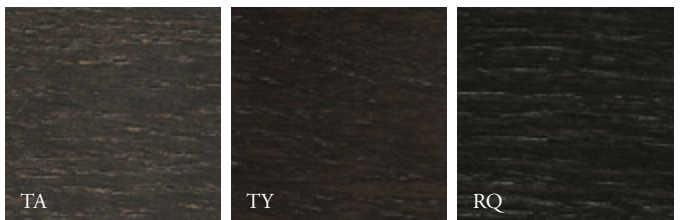
ROVERE TINTO
STAINED OAK



UH
Anilina Beige
Beige Aniline

UC
Biscotto
Biscuit

TD
Moka
Moka

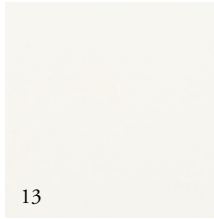


TA
Grigio Plumbeo
Dark Grey

TY
Wengé
Wengé

RQ
Carbone
Carbon

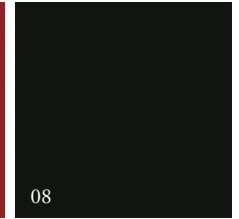
LACCATI OPACHI
MATT LACQUERED



13

Bianco
White

HB

Rubino
Ruby Red

08

Nero
Black

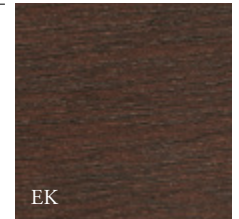
NOCE CANALETTO
CANALETTO WALNUT



ES

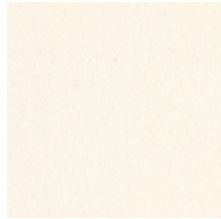
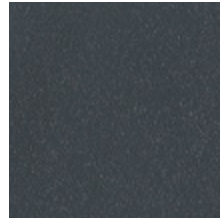
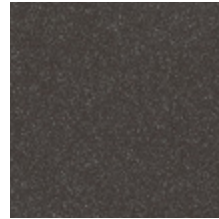
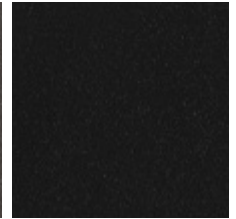
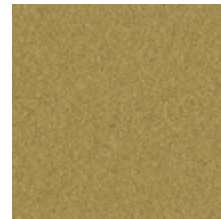
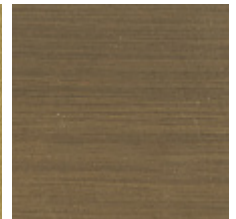
Opaco
Matt

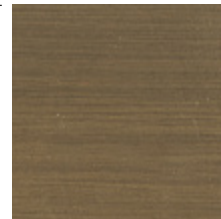
MOGANO
MAHOGANY



EK

Tinto Noce
Walnut Stained

 METALLI VERNICIATI
LACQUERED METALS

 Bianco Goffrato
 White Embossed

 Antracite Goffrato
 Anthracite Embossed

 Aval Goffrato
 Aval Embossed

 Nero Goffrato
 Black Embossed

 Oro
 Gold

 Ottone Brunito
 Bronzed Brass

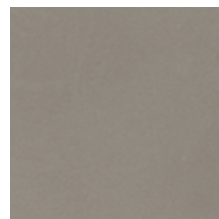
 METALLI SPECIALI
SPECIAL METALS

 Ottone Brunito
 Bronzed Brass


Corten

 INOX
INOX

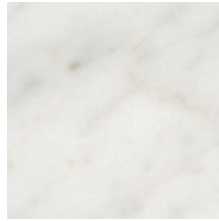
 Satinato
 Satin

 METALLI CROMATI
CHROME METALS

 Cromato
 Chrome

 Cromo Satinato
 Satin Chrome

 Cromo Nero
 Black Chrome

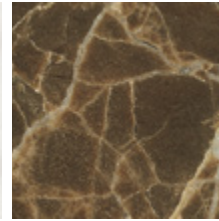
MARMI
MARBLES



Bianco Carrara opaco
Matt white Carrara



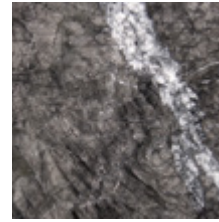
Bianco Carrara lucido
Glossy white Carrara



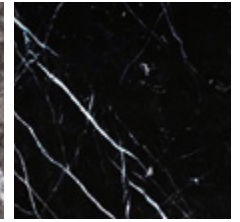
Dark Emperador



Iron Silver



Grigio Carnico



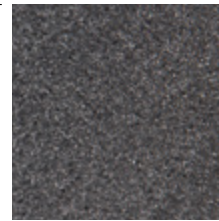
Nero Marquinia

GRÈS PORCELLANATO
LAMINATED PORCELAIN



Ossido Nero
Black Ossido

QUARZO RESINATO
RESINATED QUARTZ

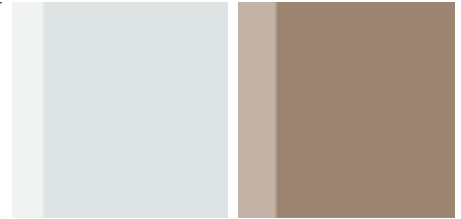


Antracite
Anthracite



Light Grey

VETRO TEMPERATO
TEMPERED GLASS



Float Trasparente
Transparent Float

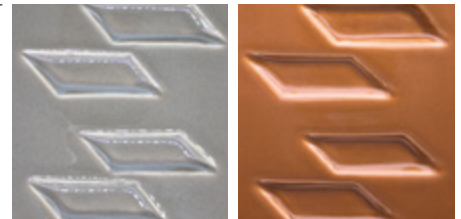
Bronzato
Bronzed

VETRO TEMPERATO RETRO VERNICIATO
TEMPERED BACK-PAINTED GLASS



Nero
Black

CERAMICA
CERAMIC



Grigio Sabbia
Sand Grey

Pesca
Peach

HPL
HPL



Antracite
Anthracite

CORDINI
ROPES



A6C
Cuoio
Hide Leather

CORDA NAUTICA
NAUTICAL ROPE



F9B
Canapa
Hemp

CORDINI GASSA
GASSA ROPES



F7E
Testa di Moro
Dark Brown

ADO - Cat.1

39% VI, 25% PES, 17% LI, 14% CO, 4% AC, 1% AF
 MARTINDALE - 20.000 cicli/rubs

Care



C5A
Bianco



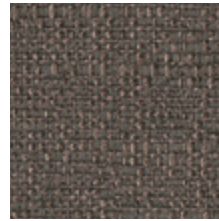
C5B
Panna



C5C
Beige



C5G
Grigio chiaro



C5D
Nocciola



C5E
Marrone

AIDA - Cat.1 **NEW**

68% PL, 32% PP
 MARTINDALE - > 135.000 cicli/rubs

Fire tests

1IM-UNI 9175
 Classe 1-UNI 9177
 EN 1021 Part 1/2
 DIN 4102-B1
 NF D-60 013-A18
 CAL TB 117:2013
 IMO MED-FTP 307 Part 8
 Önorm B 3825

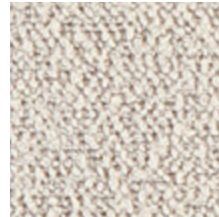
Note \ Notes

IMO-MED
 Sound absorbent
 Proposition 65

Care



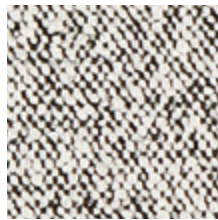
A2D
Bianco



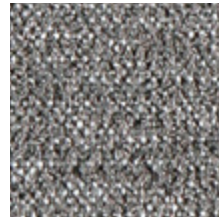
A2E
Beige



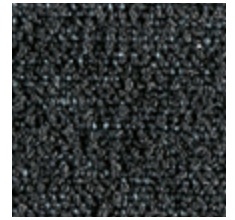
A2F
Sabbia



A2G
Pepe



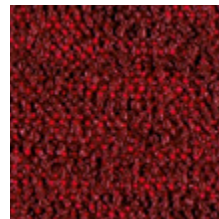
A2H
Grigio



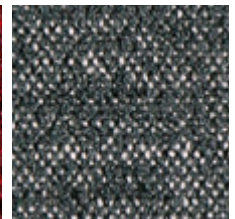
A2I
Antracite



A2J
Tronco



A2K
Rubino



A2L
Petrolio

ARES - Cat.1

77% PL, 17% CO, 6% PC
 MARTINDALE - 50.000 cicli/rubs



C7A
 Bianco



C7B
 Ghiaccio



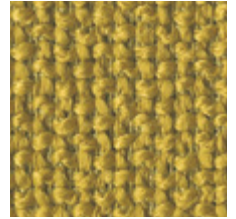
C7C
 Oliva



C7D
 Marrone



C7E
 Nero



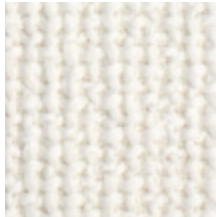
C7F
 Senape

Care

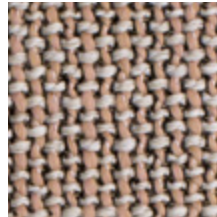


ARTE - Cat.1 **NEW**

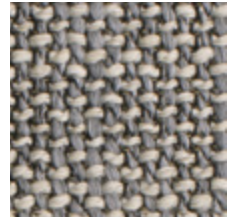
68% PC, 16% PL, 16% CO
 MARTINDALE - 25.000 cicli/rubs



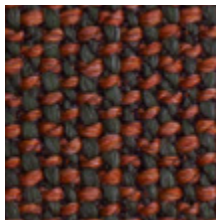
A1D
 Bianco



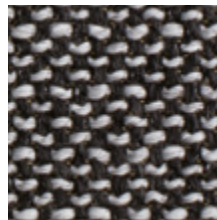
A1E
 Rosa



A1F
 Grigio chiaro



A1G
 Verde mattone

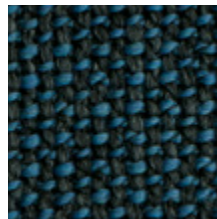


A1H
 Pepe

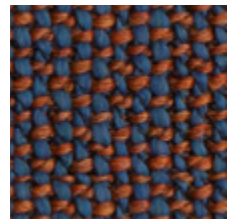


A1J
 Beige


Care



A1K
 Blu oltremare



A1L
 Blu arancio

BADIA - Cat.2 **NEW** 

47% PC, 26% CO, 9% LI, 9%PL, 9%VI
 MARTINDALE - 30.000 cicli/rubs

Fire tests

BS 5852 Cigarette
 BS 5852 Match



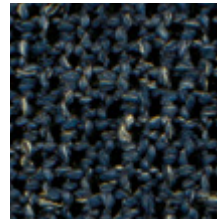
A5E
Panna



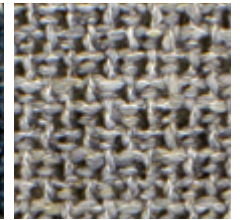
A5F
Pepe



A5G
Tronco



A5H
Blu oltremare



A5I
Grigio

Care



BARRIQUE - Cat.2 **NEW** 

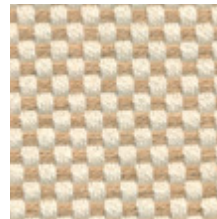
33% CO, 15% VI, 12% LI, 20% PA, 20%PL
 MARTINDALE - 100.000 cicli/rubs

Fire tests

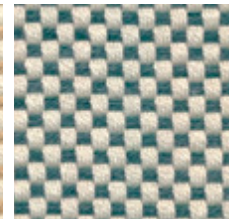
BS 5852 Cigarette
 BS 5852 Match
 CAL TB 117:2013



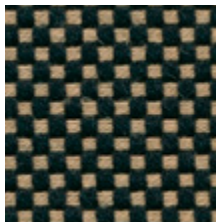
A7D
Panna



A7E
Beige



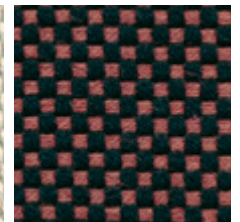
A7F
Petrolio



A7G
Sabbia



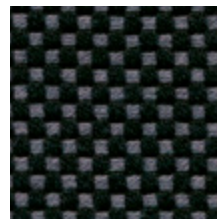
A7H
Grigio



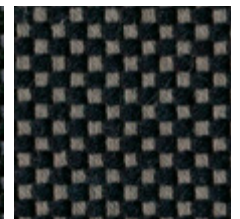
A7I
Terracotta



A7J
Rubino



A7K
Antracite



A7L
Grigio scuro

Care



BLISS - Cat.2

67% VI, 33% LI
 MARTINDALE - > 20.000 cicli/rubs

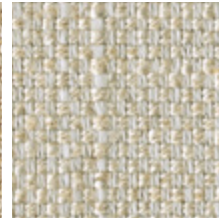
Care



H1X
Bianco



H1Z
Beige



H1Y
Panna



H1W
Nocciola

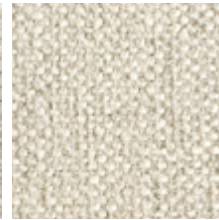
BOSS - Cat.2

58% CO, 37% VI, 5% PL
 MARTINDALE - 25.000 cicli/rubs

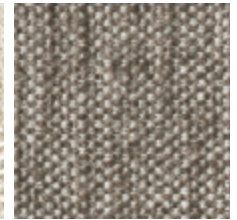
Care



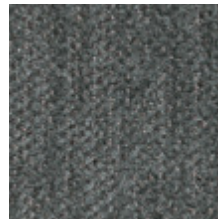
C7J
Panna



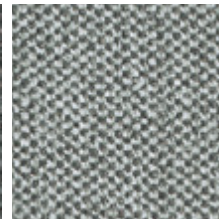
C7N
Bianco



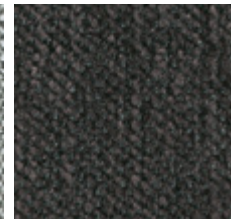
C7L
Tortora



C7I
Grigio



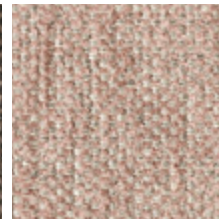
C7K
Celeste



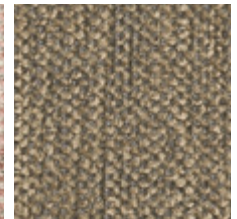
C7H
Antracite




C7M
Oliva



C7G
Rosa



C7P
Grano

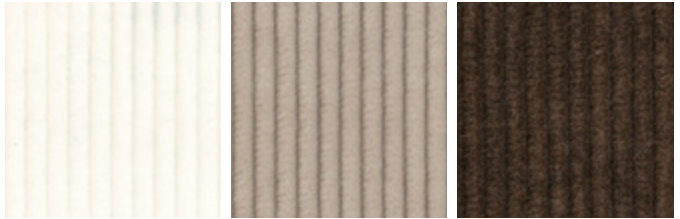
BRERA - Cat.2 (Velluto \ Velvet) **NEW** 

100% CO
MARTINDALE - 40.000 cicli/rubs

Fire tests

BS 5852 Cigarette
BS 5852 Match
CAL TB 117:2013

Care



A4D
Bianco

A4E
Beige

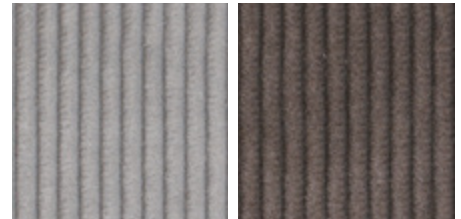
A4F
Tronco



A4G
Salvia


A4H
Antracite

A4I
Lilla



A4J
Grigio

A4K
Tortora scuro

BRIDGE - Cat.2 (Velluto \ Velvet) **NEW** 

100% Trevira® CS
MARTINDALE - 100.000 cicli/rubs

Fire tests

UNI 9175 1IM
UNI 9177 Classe 1
EN 1021-2
BS 5852 Crib 5
DIN 4102 - B1
NF92.503 - M1

Note \ Notes

Sound absorbent

Care



A3D
Bianco

A3E
Panna

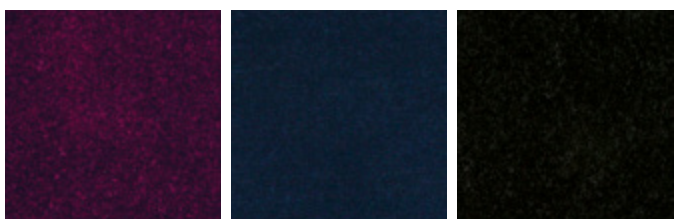
A3F
Grigio



A3G
Antracite

A3H
Salvia


A3I
Mattone



A3J
Prugna

A3K
Blu oltremare

A3L
Nero

CALIPSO - Cat.3 **NEW** 

35% CO, 25% PC, 18% PL, 13% VI, 9% WO
 MARTINDALE - 40.000 cicli/rubs

Fire tests

BS 5852 Cigarette
 BS 5852 Match
 CAL TB 117:2013
 EN 1021-1/2

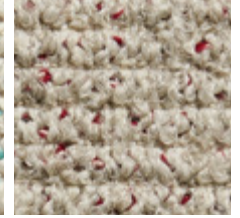
Care



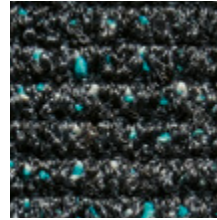
A8A
Panna



A8B
Sabbia




A8C
Tortora



A8D
Antracite



A8E
Nero

CALLA - Cat.3 **NEW** 

5% CO, 25% VI, 13% LI, 15% WO, 25% PL, 15% PC, 2% PA
 MARTINDALE - 45.000 cicli/rubs

Fire tests

BS 5852 Cigarette
 BS 5852 Match
 CAL TB 117:2013

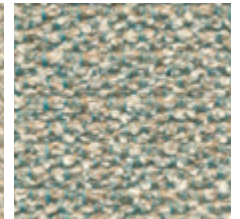
Care



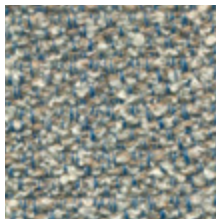
A8L
Panna



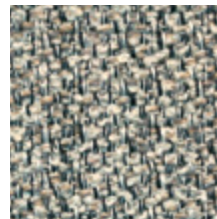
A8M
Sabbia



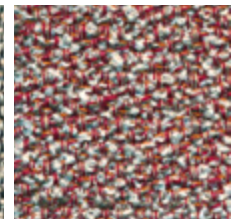
A8N
Smeraldo




A8P
Celeste



A8Q
Pepe



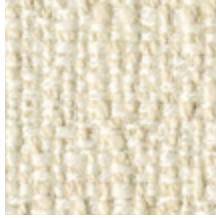
A8R
Rubino

CELINE - Cat.3 

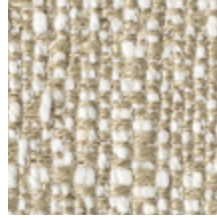
59% VI, 25% LI, 7% PL, 7% CO, 2% PC
 MARTINDALE - 27.000 cicli/rubs

Fire tests

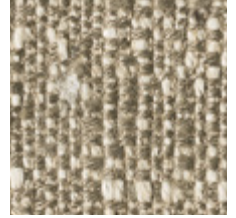
BS 5852 Cigarette
 BS 5852 Match



C6E
Bianco



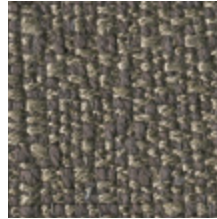
C6F
Ghiaccio



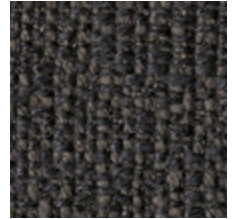
C6D
Beige




C6G
Verde




C6B
Grigio



C6C
Nero

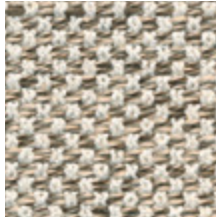
Care     

CIELO - Cat.3 **NEW** 

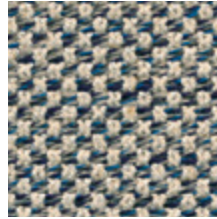
47% CO, 18% LI, 35% VI
 MARTINDALE - 50.000 cicli/rubs

Fire tests

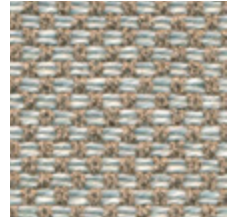
BS 5852 Cigarette
 BS 5852 Match
 CAL TB 117:2013



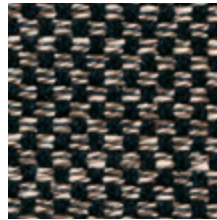
A6H
Panna



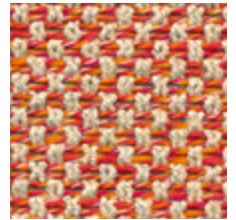
A6I
Blu oltremare



A6K
Sabbia



A6J
Tronco

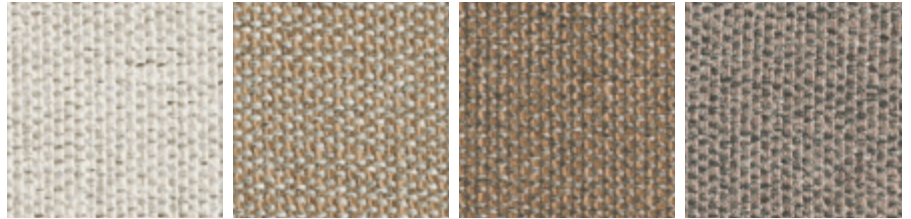


A6L
Mattone

Care     

CORE - Cat.3

59% PL, 25% PC, 16% CO
MARTINDALE - 30.000 cicli/rubs



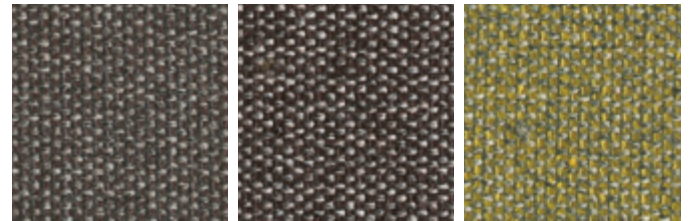
E1T
Ghiaccio

E1W
Paglia

E1Y
Senape

E1Z
Marrone chiaro

Care



E1V
Talpa

E1X
Testa di Moro

E1U
Fieno

CORTINA - Cat.3 **NEW**

100% PES FR
MARTINDALE - 50.000 cicli/rubs

Fire tests

- BS 5852 Cigarette
- BS 5852 Match
- EN 1021-1/2
- BS7176 Low hazard
- CAL TB117:2013
- NFPA 260
- IMO Annex 1 Part 8
- UNI 9175 1IM
- NF D 60 013
- DIN 4102 B2

Note \ Notes

- STANDARD 100 by OEKO-TEX®
- REACH approved chemicals and dyes
- Biocide and PFCs free
- Zero-waste production
- Acoustic certificate: EN ISO 354

Care



A9A
Bosco

A9B
Salvia

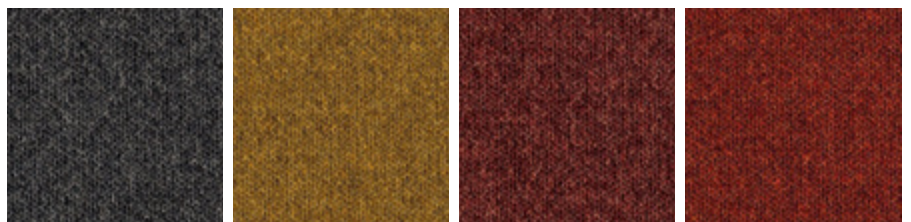
A9C
Blu oltremare



A9D
Avio

A9E
Beige

A9F
Grigio




A9G
Antracite

A9H
Senape

A9I
Terracotta

A9J
Mattone

DAFNE - Cat.4 **NEW** 

100% Trevira® CS
 MARTINDALE - 170.000 cicli/rubs

Fire tests
 Classe 1-IM
 BS 5852 Cigarette
 BS 5852 Match
 CAL TB 117:2013




B2A Bianco B2B Panna B2C Sabbia B2D Mattone

Care     



B2E Blu Oltremare B2F Grigio B2G Antracite B2H Rubino

DALÍ - Cat.4 **NEW** 

95% WV, 5% PA
 MARTINDALE - 100.000 cicli/rubs

Fire tests
 CAL TB 117:2013
 EN 1021-1/2
 UNI 9175 1IM
 ÖNORM B1-Q1
 IMO 2014/90/EU Marine Equipment Directive (MED)

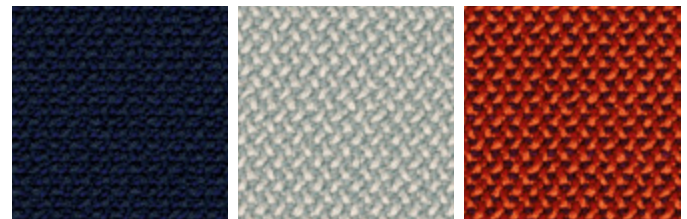
Note \ Notes
 Sound absorbent
 Natural, renewable material
 RAL-UZ 117 attachment 2+3
 IWTO guidelines for wool sheep welfare
 FR-Free
 AB 2998 (US Export Standard)
 REACH (EU Export Standard)
 Naturally stain resistant



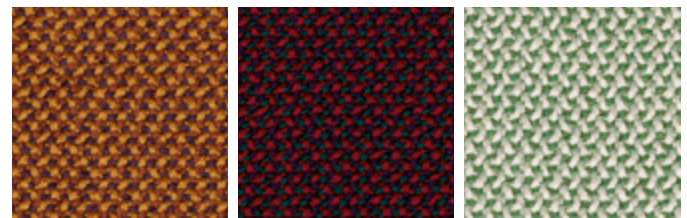
C6U Bianco C6V Sabbia C6Q Fango






C6K Grigio C6L Antracite C6M Pepe




C6S Blue Navy C6I Grigio chiaro C6T Arancione



C6H Senape C6P Rubino C6N Salvia

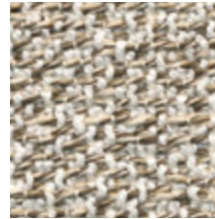
Care   

DELTA - Cat.4 **NEW** 

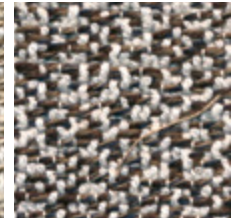
50% CO, 33% VI, 17% LI
MARTINDALE - 35.000 cicli/rubs

Fire tests

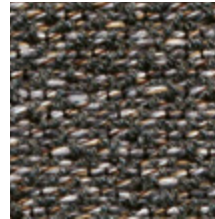
BS 5852 Cigarette
BS 5852 Match
CAL TB 117:2013



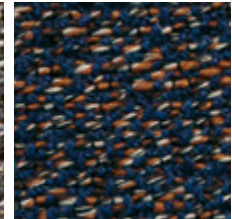
B1C
Panna melange



B1D
Tronco melange

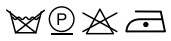


B1E
Antracite melange



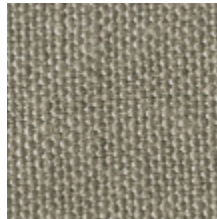
B1F
Blu mattone

Care

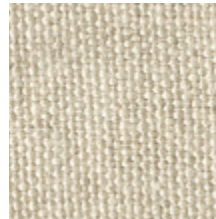


DOLINO - Cat.4 (Lino \ Linen)

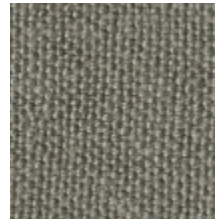
100% LI
MARTINDALE - > 25.000 cicli/rubs



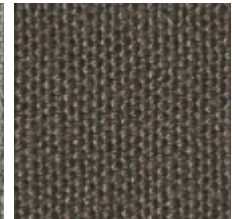
C8F
Antracite



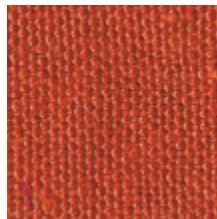
C8D
Sabbia



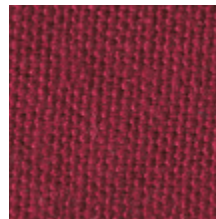
C9U
Tortora



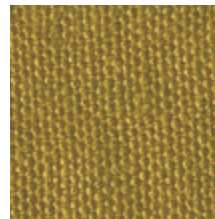
C8K
Grigio



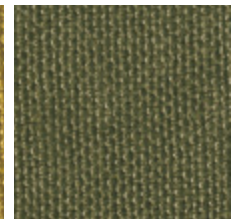
C9M
Arancione



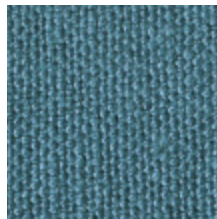
C9G
Rosso



C8M
Senape



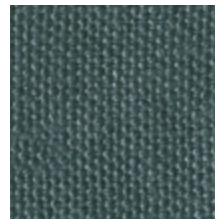
C8P
Verde Oliva



S2C
Celeste



C8Y
Blu Scuro



C8S
Denim



C9V
Grigio Scuro

Care



DORO - Cat.4 (Velluto \ Velvet)

100% CO

MARTINDALE - 100.000 cicli/rubs

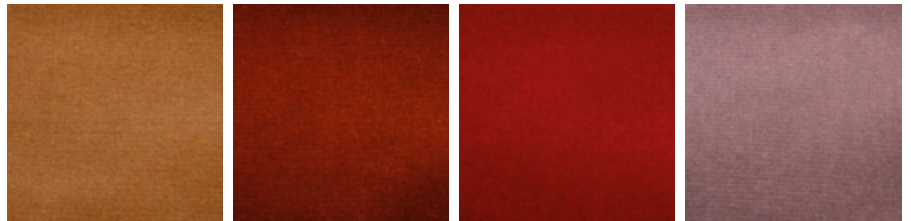


H2H
Crema

H3C
Sabbia

H2J
Nocciola

H3E
Ocra

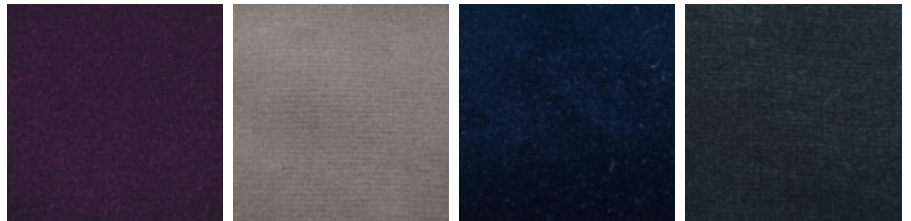


H3D
Argilla

H3F
Ruggine

H3G
Rosso imperiale

H3H
Lilla

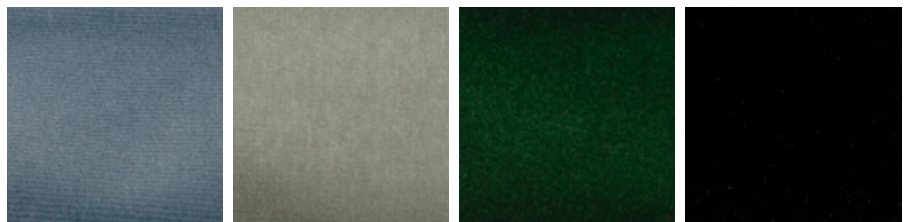


H3I
Prugna

H3J
Grigio

H2N
Notte

H2L
Antracite



H3A
Celeste

H3L
Salvia

H3M
Bosco

H3B
Nero

Care



FLAMINGO B - Cat.2 (Finta pelle \ Faux leather) 

10% CO, 20% PES, 1% PU, 69% PVC
 MARTINDALE - 100.000 cicli/rubs

Fire tests

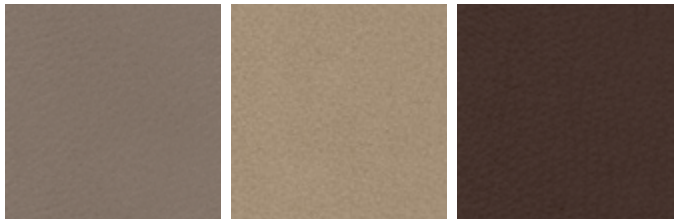
UNI 9175 IIM
 IMO-FTP
 CAL TB 117:2013



Q1C
Ecreu

Q1D
Beige

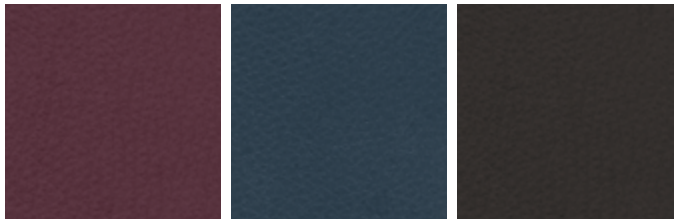
Q1E
Grigio scuro



Q1A
Tortora scuro

Q1F
Nocciola

Q1G
Mogano




Q1H
Bordeaux

Q1I
Blu Notte

Q1B
Nero

Care



FALABELLA - Cat.3 (Finta pelle \ Faux leather) 

63% PU, 29% CO, 8% PES
 MARTINDALE - 150.000 cicli/rubs

Fire tests

UNI 9175 IIM
 EN 1021-1/2
 BS 5852 Crib 5
 BS 5852 Match
 IMO 2010 FTP CODE
 CAL TB 117:2013

Note \ Notes

Waterproof
 Resistance to mould and bacteria
 Phthalates free



KN
Panna

KP
Beige

PM
Tortora chiaro



PF
Grigio chiaro

PG
Antracite


YA
Verde oliva

Care



KV
Bronzo

KU
Marrone Testa di Moro

GEO - Cat.A (Pelle \ Leather) 

Bovino europeo \ European bovine
 Fiore corretto \ Corrected grain
 Spessore \ Thickness - 0,9 - 1,1 mm

Fire tests

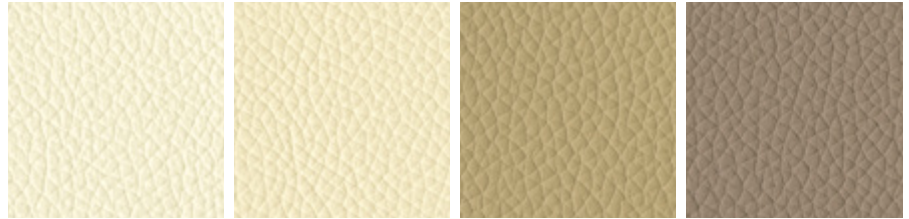
EN 1021-1/2

BS 5852 Cigarette

BS 5852 Match

IMO MED FTP8 A652

CAL TB 117:2013

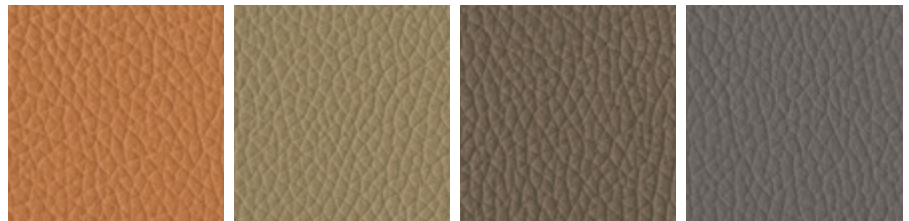


P2A
Panna

P1B
Grano

P1D
Beige scuro

P2D
Tortora



P2C
Ruggine

P1K
Nocciola

P1M
Tronco

P2G
Grigio scuro

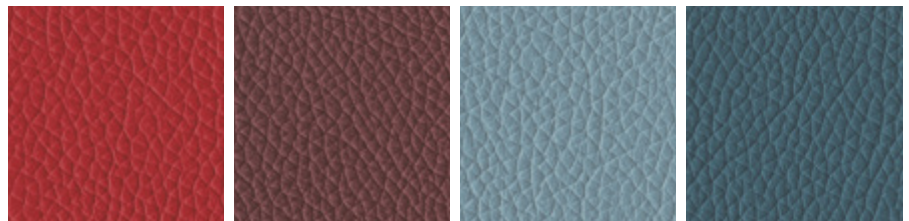


P1N
Noce

P2H
Marrone Scuro

P1T
Terracotta

P1V
Rosso

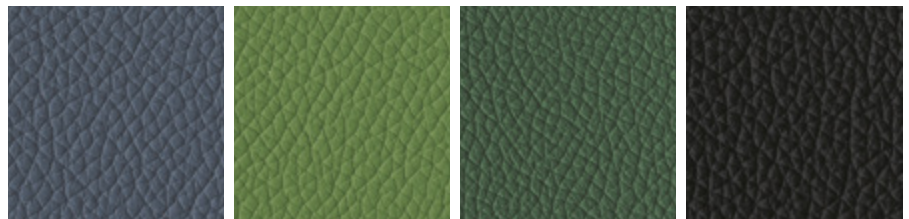


P1W
Bordeaux

P2N
Melanzana

P2Q
Celeste

P2S
Blu cadetto




P2T
Blu Prussia

P3B
Verde chiaro

P3C
Verde

P2F
Nero

GALEA - Cat.B (Pelle \ Leather) 

Bovino europeo \ European bovine
 Fiore corretto \ Corrected grain
 Spessore \ Thickness - 1,0 - 1,2 mm

Fire tests

EN 1021-1/2

BS 5852 Cigarette

BS 5852 Match

IMO MED FTP8 A652

CAL TB 117:2013



C4I
Bianco

C4Q
Beige

C4T
Tortora
chiaro

C4U
Tortora

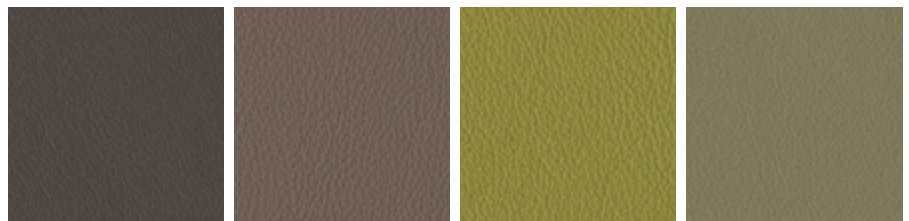


C4P
Zucca

C4H
Rosso scuro

C4V
Dattero

C4K
Castagna



C4L
Marrone
scuro

C4S
Marmotta

C4W
Verde mus-
chio

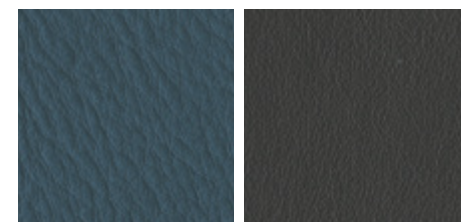
C4N
Verde mimet-
ico



C4R
Grigio

C4J
Grigio chiaro

C4G
Bluette

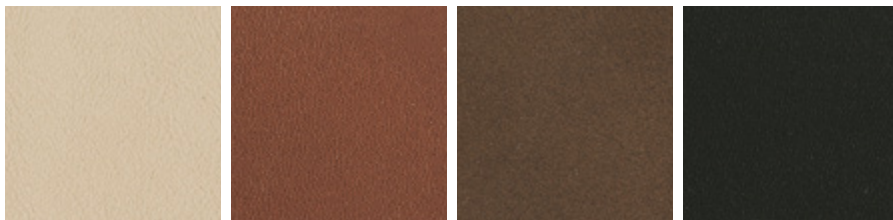


C4M
Blu

C4F
Nero

NINA - Cat.B (Pelle \ Leather)

Bovino europeo \ European bovine
 Pieno fiore \ Full grain
 Spessore \ Thickness - 0,9 - 1,0 mm



KK
Naturale

XZ
Nocciola

KL
Marrone

KJ
Nero

NABUK - Cat.C (Pelle \ Leather) ~~⊗~~

Bovino europeo \ European bovine
 Nabuk idrorepellente \ Water-repellent Nabuk
 Spessore \ Thickness - 1,1 - 1,3 mm

Fire tests

EN 1021-1/2
 BS 5852 Cigarette
 BS 5852 Match
 IMO MED FTP8 A652
 CAL TB 117:2013

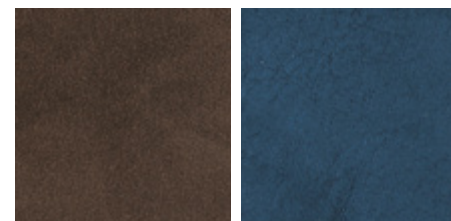


E2Q
Nocciola

E2T
Tortora

E2R
Avena

E2U
Marmotta



E2S
Wengé

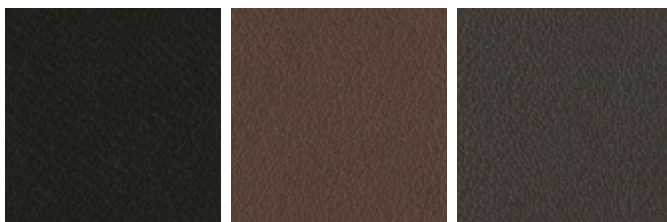
E2V
Blu

NATURE - Cat.C (Pelle \ Leather) ~~⊗~~

Bovino europeo \ European bovine
 Anilina pieno fiore \ Aniline full grain
 Spessore \ Thickness - 1,0 - 1,2 mm

Fire tests

EN 1021-1/2
 BS 5852 Cigarette
 BS 5852 Match
 CAL TB 117:2013
 NFPA 260/UFAC



C9X
Antracite

C9Y
Marrone

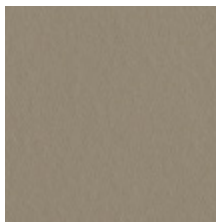
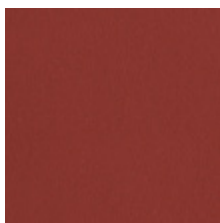
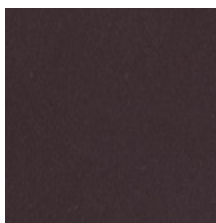
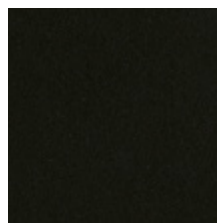
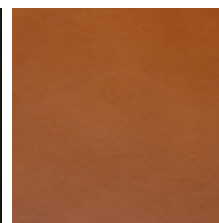
C9Z
Testa di Moro

CUOINETTO \ HIDE LEATHER

Bovino europeo \ European bovine

Fiore liscio \ Smooth grain

Spessore \ Thickness - 1,8 mm

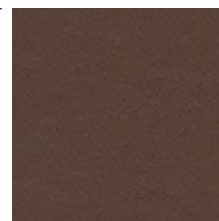
K1F
SabbiaK1B
Fango1S
GrigioK1C
TerracottaBL
BurganK1D
Marrone scuroBM
NeroIZ
Cognac

CUOIO \ SADDLE LEATHER

Bovino europeo \ European bovine

Pieno fiore \ Full grain

Spessore \ Thickness - 2,7 mm

C6A
Testa di Moro