

DEDON

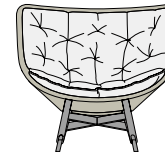
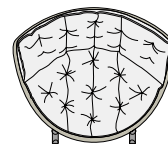
MBRACE

MBRACE

Rocking chair

Design by **Sebastian Herkner** | Item code: **085008** | Weight **9,9 kg/22 lbs** | Volume **1,01 m³/36 cu ft** | COM (Customer Own Material): **1,80 m/2.25 yd** (plain fabric only)

Measurements



107
42¼

41 8
16¼ 3¼

102
40¼

91
35¼

cm
inch

Collection: MBRACE by Sebastian Herkner takes a joyfully unconventional approach to poolside furniture, bringing DEDON fiber seating and a solid teak base together for the very first time. The result is an eye-catching, instantly likable collection for lounging, dining and more. MBRACE captures the spirit of barefoot luxury while extending the DEDON design language into new, more Nordic territory.

Characteristics: Friendly, engaging, embracing, innovative, exceptionally comfortable

Rocking chair: This wing-back rocking chair features a triaxial open-weave seat, a solid-teak base and a choice of comfortable cushions.

Frame: The frame consists of aluminum. The base consists of premium teak.

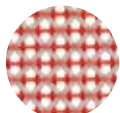
Finishing: The frame is electrostatic powder-coated in a color similar to that of the fiber. The base consists of natural-finish teak.

Frame maintenance: Clean with a soft cloth and warm water. Wash the teak base using DEDON teak cleaner. To retain the golden-brown color of unweathered teak, we recommend applying DEDON teak oil at least once in every six months.

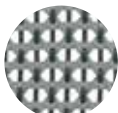
Cushion maintenance: While the covers cannot be removed, the complete cushions may be washed by hand at 30 °C / 86 °F.

Options: This item is also available with a headrest cushion.

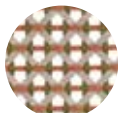
Fibers



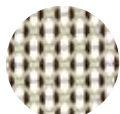
112
spice



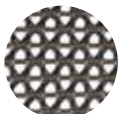
141
baltic



151
chestnut



115
pepper

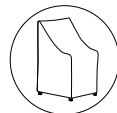


126
arabica



140
sea salt

Additional items



Cover

56085004000

Cushions

Cushion: **95085004 + fabric code**

Seat cushion: **95085016 + fabric code**

Headrest cushion: **95085005 + fabric code**

Please see fabric options fact sheet

To learn more about DEDON, our collections and warranty policy, please visit our website –

www.dedon.de

10/20

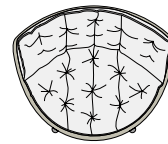
DEDON

MBRACE

Wing chair

Design by **Sebastian Herkner** | Item code: **085004** | Weight **8,6 kg/19 lbs** | Volume **0,92 m³/33 cu ft** | COM (Customer Own Material): **1,80 m/2.25 yd** (plain fabric only)

Measurements



107
42¼

95 8
13¾ 3¼

89
35

97
38¼
cm
inch

Collection: MBRACE by Sebastian Herkner takes a joyfully unconventional approach to poolside furniture, bringing DEDON fiber seating and a solid teak base together for the very first time. The result is an eye-catching, instantly likable collection for lounging, dining and more. MBRACE captures the spirit of barefoot luxury while extending the DEDON design language into new, more Nordic territory.

Characteristics: Friendly, engaging, embracing, innovative, exceptionally comfortable

Wing chair: This wing-back lounge features a triaxial open-weave seat, a solid-teak base and a choice of comfortable cushions.

Frame: The frame consists of aluminum. The base consists of premium teak.

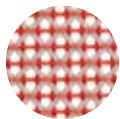
Finishing: The frame is electrostatic powder-coated in a color similar to that of the fiber. The base consists of natural-finish teak.

Frame maintenance: Clean with a soft cloth and warm water. Wash the teak base using DEDON teak cleaner. To retain the golden-brown color of unweathered teak, we recommend applying DEDON teak oil at least once in every six months.

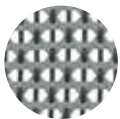
Cushion maintenance: While the covers cannot be removed, the complete cushions may be washed by hand at 30 °C / 86 °F.

Options: This item is also available with a headrest cushion.

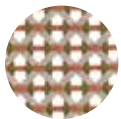
Fibers



112
spice



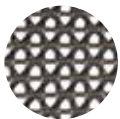
141
baltic



151
chestnut



115
pepper

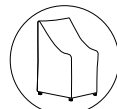


126
arabica



140
sea salt

Additional items



Cover

56085004000

Cushions

Cushion: **95085004 + fabric code**

Seat cushion: **95085016 + fabric code**

Headrest cushion: **95085005 + fabric code**

Please see fabric options fact sheet

To learn more about DEDON, our collections and warranty policy, please visit our website –

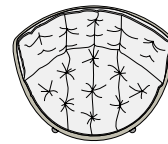
www.dedon.de

MBRACE ALU

Wing chair

Design by **Sebastian Herkner** | Item code: **085304** | Weight **13.5 kg/30 lbs** | Volume **0.92 m³/33cu ft** | COM (Customer Own Material): **1,80 m/2.25 yd** (plain fabric only)

Measurements



107
42¼

96 8
13% 3¼

89
35

97
38¼
cm
inch

Collection: MBRACE by Sebastian Herkner takes a joyfully unconventional approach to poolside furniture, bringing DEDON fiber seating and a solid teak base together for the very first time. The result is an eye-catching, instantly likable collection for lounging, dining and more. MBRACE captures the spirit of barefoot luxury while extending the DEDON design language into new, more Nordic territory.

Characteristics: Friendly, engaging, embracing, innovative, exceptionally comfortable

Wing chair: This iconic wing chair, which features a triaxial mesh weave and aluminum legs, is very low-maintenance.

Frame: The MBRACE ALU seats are made of DEDON Fiber woven over an aluminum frame and feature powder coated aluminum bases.

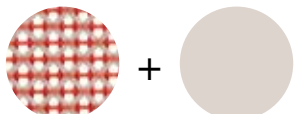
Finishing: The seat frame is electrostatic powder-coated in a color similar to that of the fiber.

Frame maintenance: Clean with a soft cloth and warm water.

Cushion maintenance: While the covers cannot be removed, the complete cushions may be washed by hand at 30 °C / 86 °F.

Options: This item is also available with a headrest cushion.

Fiber standard / powder coating combination



112
spice

304
lipari



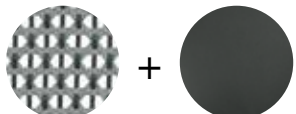
115
pepper

304
lipari



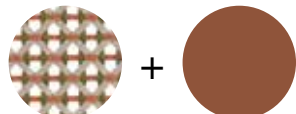
126
arabica

317
black pepper



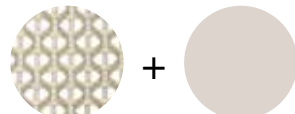
141
baltic

133
nori



151
chestnut

084
terracotta



140
sea salt

304
lipari

Additional items



Cover

56085004000

Cushions

Cushion: **95085004 + fabric code**

Seat cushion: **95085016 + fabric code**

Headrest cushion: **95085005 + fabric code**

Please see fabric options fact sheet

To learn more about DEDON, our collections and warranty policy, please visit our website –

www.dedon.de

10/20

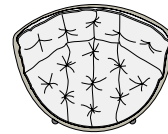
DEDON

MBRACE

Lounge chair

Design by **Sebastian Herkner** | Item code: **085006** | Weight **7,5 kg/17 lbs** | Volume **0,71 m³/25 cu ft** | COM (Customer Own Material): **1,80 m/2.25 yd** (plain fabric only)

Measurements



107
42 1/4

35 8
13 3/4 5 1/4

84
33

78
30 3/4

cm
inch

Collection: MBRACE by Sebastian Herkner takes a joyfully unconventional approach to poolside furniture, bringing DEDON fiber seating and a solid teak base together for the very first time. The result is an eye-catching, instantly likable collection for lounging, dining and more. MBRACE captures the spirit of barefoot luxury while extending the DEDON design language into new, more Nordic territory.

Characteristics: Friendly, engaging, embracing, innovative, exceptionally comfortable

Lounge chair: This low-back lounger features a triaxial open-weave seat, a solid-teak base and a choice of comfortable cushions.

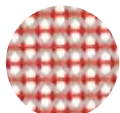
Frame: The frame consists of aluminum. The base consists of premium teak.

Finishing: The frame is electrostatic powder-coated in a color similar to that of the fiber. The base consists of natural-finish teak.

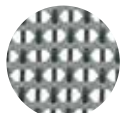
Frame maintenance: Clean with a soft cloth and warm water. Wash the teak base using DEDON teak cleaner. To retain the golden-brown color of unweathered teak, we recommend applying DEDON teak oil at least once in every six months.

Cushion maintenance: While the covers cannot be removed, the complete cushions may be washed by hand at 30 °C / 86 °F.

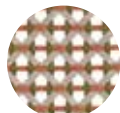
Fibers



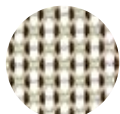
112
spice



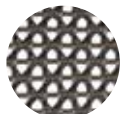
141
baltic



151
chestnut



115
pepper

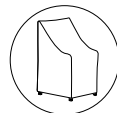


126
arabica



140
sea salt

Additional items



Cover

56085006000

Cushions

Cushion: **95085006 + fabric code**
Seat cushion: **95085016 + fabric code**

Please see fabric options fact sheet

To learn more about DEDON, our collections and warranty policy, please visit our website –

www.dedon.de

10/20

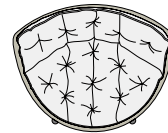
DEDON

MBRACE ALU

Lounge chair

Design by **Sebastian Herkner** | Item code: **085306** | Weight **12.4 kg/28 lbs** | Volume **0.73 m³/25 cu ft** | COM (Customer Own Material): **1,80 m/2.25 yd** (plain fabric only)

Measurements



107
42¼

35 8
13¾ 3¼

84
33

78
30¾

cm
inch

Collection: MBRACE by Sebastian Herkner takes a joyfully unconventional approach to poolside furniture, bringing DEDON fiber seating and a solid teak base together for the very first time. The result is an eye-catching, instantly likable collection for lounging, dining and more. MBRACE captures the spirit of barefoot luxury while extending the DEDON design language into new, more Nordic territory.

Characteristics: Friendly, engaging, embracing, innovative, exceptionally comfortable

Lounge chair: This iconic lounge chair, which features a triaxial mesh weave and aluminum legs, is very low-maintenance.

Frame: The MBRACE ALU seats are made of DEDON Fiber woven over an aluminum frame and feature powder coated aluminum bases.

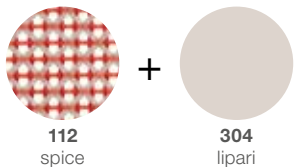
Finishing: The seat frame is electrostatic powder-coated in a color similar to that of the fiber.

Frame maintenance: Clean with a soft cloth and warm water.

Cushion maintenance: While the covers cannot be removed, the complete cushions may be washed by hand at 30 °C / 86 °F.

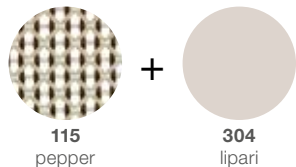
Options: This item is available with a choice of comfortable cushions.

Fiber standard / powder coating combination



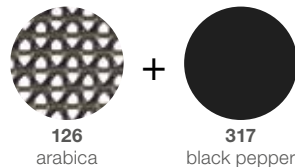
112
spice

304
lipari



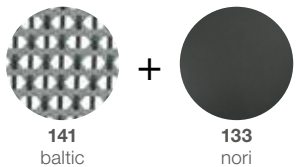
115
pepper

304
lipari



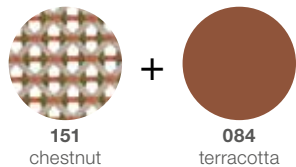
126
arabica

317
black pepper



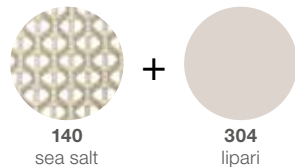
141
baltic

133
nori



151
chestnut

084
terracotta



140
sea salt

304
lipari

Additional items



Cover

56085006000

Cushions

Cushion: **95085006 + fabric code**
Seat cushion: **95085016 + fabric code**

Please see fabric options fact sheet

To learn more about DEDON, our collections and warranty policy, please visit our website –

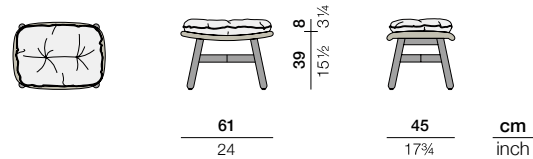
www.dedon.de

MBRACE

Footstool

Design by **Sebastian Herkner** | Item code: **085032** | Weight **3,8 kg/9 lbs** | Volume **0,11 m³/4 cu ft** | COM (Customer Own Material): **0,75 m/1.50 yd** (plain fabric only)

Measurements



Collection: MBRACE by Sebastian Herkner takes a joyfully unconventional approach to poolside furniture, bringing DEDON fiber seating and a solid teak base together for the very first time. The result is an eye-catching, instantly likable collection for lounging, dining and more. MBRACE captures the spirit of barefoot luxury while extending the DEDON design language into new, more Nordic territory.

Characteristics: Friendly, engaging, embracing, innovative, exceptionally comfortable

Footstool: Featuring a triaxial open-weave top and a solid-teak base, the MBRACE footstool goes perfectly with all three chairs in the collection.

Frame: The frame consists of aluminum. The base consists of premium teak.

Finishing: The frame is electrostatic powder-coated in a color similar to that of the fiber. The base consists of natural-finish teak.

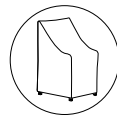
Frame maintenance: Clean with a soft cloth and warm water. Wash the teak base using DEDON teak cleaner. To retain the golden-brown color of unweathered teak, we recommend applying DEDON teak oil at least once in every six months.

Cushion maintenance: While the covers cannot be removed, the complete cushions may be washed by hand at 30 °C / 86 °F.

Fibers



Additional items



Cover

56085032000

Cushions

Cushion: **95085032 + fabric code**

Please see fabric options fact sheet

To learn more about DEDON, our collections and warranty policy, please visit our website –

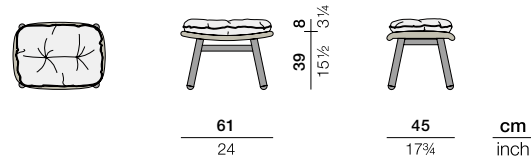
www.dedon.de

MBRACE ALU

Footstool

Design by **Sebastian Herkner** | Item code: **085332** | Weight **8.8 kg/20 lbs** | Volume **0.3 m³/4 cu ft** | COM (Customer Own Material): **0,75 m/1.50 yd** (plain fabric only)

Measurements



Collection: MBRACE by Sebastian Herkner takes a joyfully unconventional approach to poolside furniture, bringing DEDON fiber seating and a solid teak base together for the very first time. The result is an eye-catching, instantly likable collection for lounging, dining and more. MBRACE captures the spirit of barefoot luxury while extending the DEDON design language into new, more Nordic territory.

Characteristics: Friendly, engaging, embracing, innovative, exceptionally comfortable

Footstool: This iconic footstool, which features a triaxial mesh weave and aluminum legs, is very low-maintenance.

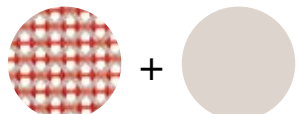
Frame: The MBRACE ALU seats are made of DEDON Fiber woven over an aluminum frame and feature powder coated aluminum bases.

Finishing: The seat frame is electrostatic powder-coated in a color similar to that of the fiber.

Frame maintenance: Clean with a soft cloth and warm water.

Cushion maintenance: While the covers cannot be removed, the complete cushions may be washed by hand at 30 °C / 86 °F.

Fiber standard / powder coating combination



112
spice

304
lipari



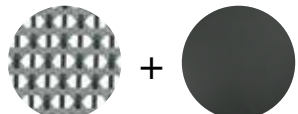
115
pepper

304
lipari



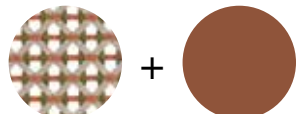
126
arabica

317
black pepper



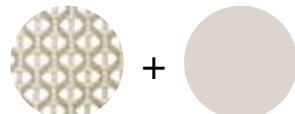
141
baltic

133
nori



151
chestnut

084
terracotta



140
sea salt

304
lipari

Additional items



Cover

56085032000

Cushions

Cushion: 95085032 + fabric code

Please see fabric options fact sheet

To learn more about DEDON, our collections and warranty policy, please visit our website –

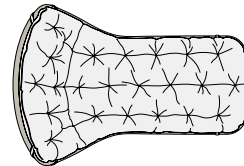
www.dedon.de

MBRACE

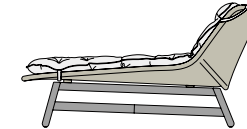
Daybed

Design by Sebastian Herkner | Item code: 085018 | Weight 14,4 kg/32 lbs | Volume 1,35 m³/48 cu ft | COM (Customer Own Material): 4,25 m/5,25 yd (plain fabric only)

Measurements



35
8
13 3/4



80
31 1/2

115
4 1/4

190
6 2 1/2

cm
inch

Collection: MBRACE by Sebastian Herkner takes a joyfully unconventional approach to poolside furniture, bringing DEDON fiber seating and a solid teak base together for the very first time. The result is an eye-catching, instantly likable collection for lounging, dining and more. MBRACE captures the spirit of barefoot luxury while extending the DEDON design language into new, more Nordic territory.

Characteristics: Friendly, engaging, embracing, innovative, exceptionally comfortable

Daybed: This luxurious daybed has a distinctive organic form that echoes the design of the MBRACE loungers. Featuring cosy cushions and an open triaxial weave, it offers the possibility of sitting and lying in different positions.

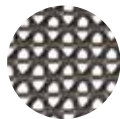
Frame: The frame consists of aluminum. The base consists of premium teak.

Finishing: The frame is electrostatic powder-coated in a color similar to that of the fiber. The base consists of natural-finish teak.

Frame maintenance: Clean with a soft cloth and warm water. Wash the teak base using DEDON teak cleaner. To retain the golden-brown color of unweathered teak, we recommend applying DEDON teak oil at least once in every six months.

Cushion maintenance: While the covers cannot be removed, the complete cushions may be washed by hand at 30 °C / 86 °F.

Fibers

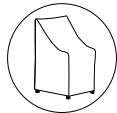


126
arabica



115
pepper

Additional items



Cover

56085018000

Cushions

Cushion: 95085018+ fabric code

Please see fabric options fact sheet

To learn more about DEDON, our collections and warranty policy, please visit our website –

www.dedon.de

10/20

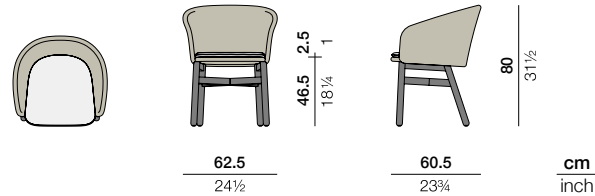
DEDON

MBRACE

Armchair

Design by **Sebastian Herkner** | Item code: **085001** | Weight **5,6 kg/13 lbs** | Volume **0,3 m³/11 cu ft** | COM (Customer Own Material): **0,57 m/0,75 yd** (plain fabric only)

Measurements



Collection: MBRACE by Sebastian Herkner takes a joyfully unconventional approach to poolside furniture, bringing DEDON fiber seating and a solid teak base together for the very first time. The result is an eye-catching, instantly likable collection for lounging, dining and more. MBRACE captures the spirit of barefoot luxury while extending the DEDON design language into new, more Nordic territory.

Characteristics: Friendly, engaging, embracing, innovative, exceptionally comfortable

Armchair: Bringing the shape, sensibility and material mix of the MBRACE loungers into dining, this distinctive chair cocoons users in cosy comfort while offering exceptional value.

Frame: The frame consists of aluminum. The base consists of premium teak.

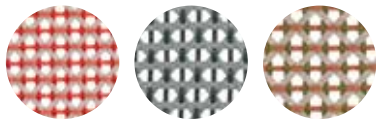
Finishing: The frame is electrostatic powder-coated in a color similar to that of the fiber. The base consists of natural-finish teak.

Frame maintenance: Clean with a soft cloth and warm water. Wash the teak base using DEDON teak cleaner. To retain the golden-brown color of unweathered teak, we recommend applying DEDON teak oil at least once in every six months.

Cushion maintenance: Remove the cushions and wash at 30 °C / 86 °F.

Option: This new back cushion, together with the existing seat cushion, adapts to the wraparound shape of the armchair for even greater comfort.

Fibers



112

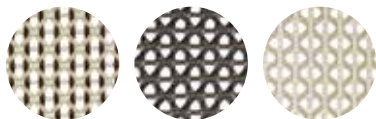
spice

141

baltic

151

chestnut



115

pepper

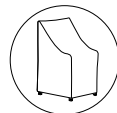
126

arabica

140

sea salt

Additional items



Cover

56085001000

Cushions

Seat cushion: **95085001 + fabric code**

Optional back cushion: **95103002 + fabric code**

Please see fabric options fact sheet

To learn more about DEDON, our collections and warranty policy, please visit our website –

www.dedon.de

10/20

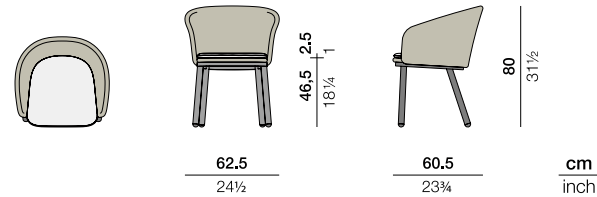
DEDON

MBRACE ALU

Armchair

Design by **Sebastian Herkner** | Item code: **085301** | Weight **8,2 kg/19 lbs** | Volume **0.3m³/11 cu ft** | COM (Customer Own Material): **0,57 m/0,75 yd** (plain fabric only)

Measurements



Collection: MBRACE by Sebastian Herkner takes a joyfully unconventional approach to poolside furniture, bringing DEDON fiber seating and a solid teak base together for the very first time. The result is an eye-catching, instantly likable collection for lounging, dining and more. MBRACE captures the spirit of barefoot luxury while extending the DEDON design language into new, more Nordic territory.

Characteristics: Friendly, engaging, embracing, innovative, exceptionally comfortable

Armchair: This iconic dining chair, which features a triaxial mesh weave and aluminum legs, is very low-maintenance.

Frame: The MBRACE ALU seats are made of DEDON Fiber woven over an aluminum frame and feature powder-coated aluminum bases.

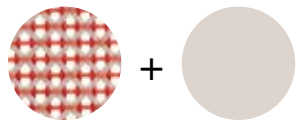
Finishing: The seat frame is electrostatic powder-coated in a color similar to that of the fiber.

Frame maintenance: Clean with a soft cloth and warm water.

Cushion maintenance: Remove the cushions and wash at 30 °C / 86 °F.

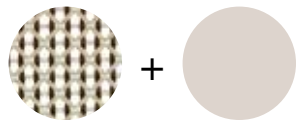
Option: This new back cushion, together with the existing seat cushion, adapts to the wraparound shape of the armchair for even greater comfort.

Fiber standard / powder coating combination



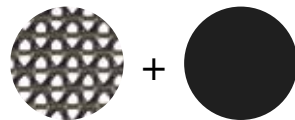
112
spice

304
lipari



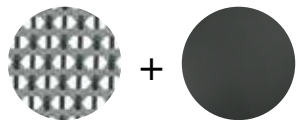
115
pepper

304
lipari



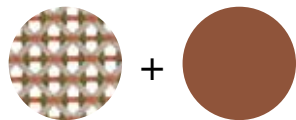
126
arabica

317
black pepper



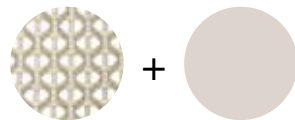
141
baltic

133
nori



151
chestnut

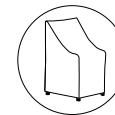
084
terracotta



140
sea salt

304
lipari

Additional items



Cover

56085001000

Cushions

Seat cushion: **95085001+ fabric code**
Optional back cushion **95103002 + fabric code**

Please see fabric options fact sheet

To learn more about DEDON, our collections and warranty policy, please visit our website –

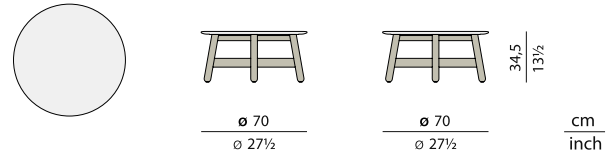
www.dedon.de

MBRACE

Coffee table Ø 70 cm / Ø 27½"

Design by Sebastian Herkner | Item code: 085038 | Weight 17,2 kg/38 lbs | Volume 0,17 m³/3 cu ft

Measurements



Collection: MBRACE brings cocooning comfort, iconic style and a modern material mix of teak and fiber to the outdoors. Sebastian Herkner's award-winning collection takes its name from the welcoming gesture of the seating, which wraps users in a cosy embrace. Now available in Baltic, Sea Salt and four other colorways, MBRACE comprises a full range of dining and lounging elements, including coffee and side tables with handcrafted ceramic surface patterns.

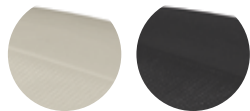
Characteristics: Friendly, engaging, embracing, innovative, handcrafted.

Coffee table: The coffee table Ø 70 cm (Ø 27½") features a solid-teak base with a frost-proof, non-absorbent, impact-resistant ceramic tabletop in a handcrafted pattern. Available in chalk, taupe or black, the coffee table Ø 70 cm (Ø 27½") combines with the MBRACE coffee tables and other side tables to create a series of overlapping tabletops.

Frame: The base consists of natural finish teak. The tabletops are made of Monolite Ipergres®, a frost-proof ceramic material.

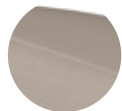
Maintenance: Clean with a soft cloth and warm water. Wash the teak base using DEDON teak cleaner. To retain the golden-brown color of unweathered teak, we recommend applying DEDON teak oil at least once in every six months.

Tabletop ceramic



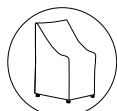
300
chalk

341
black



308
taupe

Additional items



Cover

56085038000

To learn more about DEDON, our collections and warranty policy, please visit our website –

www.dedon.de

10/20

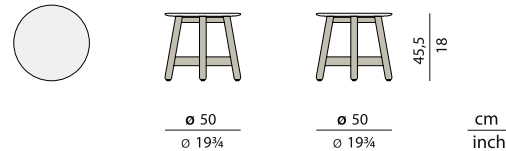
DEDON

MBRACE

Side table Ø 50 cm / Ø 19¾"

Design by **Sebastian Herkner** | Item code: **085036** | Weight **9,2 kg/20 lbs** | Volume **0,11 m³/4 cu ft**

Measurements



Collection: MBRACE brings cocooning comfort, iconic style and a modern material mix of teak and fiber to the outdoors. Sebastian Herkner's awardwinning collection takes its name from the welcoming gesture of the seating, which wraps users in a cosy embrace. Now available in Baltic, Sea Salt and four other colorways, MBRACE comprises a full range of dining and lounging elements, including coffee and side tables with handcrafted ceramic surface patterns.

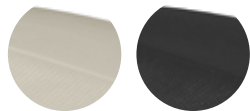
Characteristics: Friendly, engaging, embracing, innovative, handcrafted.

Side table: The side table Ø 50 cm (Ø 19¾") features a solid-teak base with a frost-proof, non-absorbent, impact-resistant ceramic tabletop in a handcrafted pattern. Available in chalk, taupe or black, the side table Ø 50 cm (Ø 19¾") combines with the MBRACE coffee tables and other side tables to create a series of overlapping tabletops.

Frame: The base consists of natural finish teak. The tabletops are made of Monolite Ipergres®, a frost-proof ceramic material.

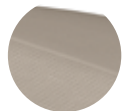
Maintenance: Clean with a soft cloth and warm water. Wash the teak base using DEDON teak cleaner. To retain the golden-brown color of unweathered teak, we recommend applying DEDON teak oil at least once in every six months.

Tabletop ceramic



300
chalk

341
black



308
taupe

Additional items



Cover

56085036000

To learn more about DEDON, our collections and warranty policy, please visit our website –

www.dedon.de

10/20

DEDON

MBRACE

Side table Ø 35 cm / Ø 13¾"

Design by **Sebastian Herkner** | Item code: **085034** | Weight **6,2kg/14 lbs** | Volume **0,06 m³/3 cu ft**

Measurements



Ø 35
Ø 13¾

Ø 35
Ø 13¾

50.5
19½
cm
inch

Collection: MBRACE brings cocooning comfort, iconic style and a modern material mix of teak and fiber to the outdoors. Sebastian Herkner's award-winning collection takes its name from the welcoming gesture of the seating, which wraps users in a cosy embrace. Now available in Baltic, Sea Salt and four other colorways, MBRACE comprises a full range of dining and lounging elements, including coffee and side tables with handcrafted ceramic surface patterns.

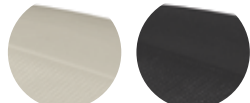
Characteristics: Friendly, engaging, embracing, innovative, handcrafted.

Side table: The side table Ø 35 cm (Ø 13¾") features a solid-teak base with a frost-proof, non-absorbent, impact-resistant ceramic tabletop in a handcrafted pattern. Available in chalk, taupe or black, the side table Ø 35 cm (Ø 13¾") combines with the MBRACE coffee tables and other side tables to create a series of overlapping tabletops.

Frame: The base consists of natural finish teak. The tabletops are made of Monolite Ipergres®, a frost-proof ceramic material.

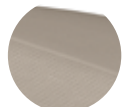
Maintenance: Clean with a soft cloth and warm water. Wash the teak base using DEDON teak cleaner. To retain the golden-brown color of unweathered teak, we recommend applying DEDON teak oil at least once in every six months.

Tabletop ceramic



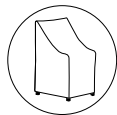
300
chalk

341
black



308
taupe

Additional items



Cover

56085034000

To learn more about DEDON, our collections and warranty policy, please visit our website –

www.dedon.de

10/20

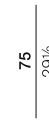
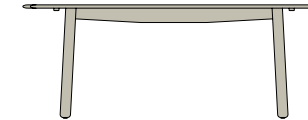
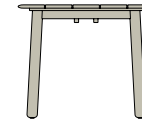
DEDON

MBRACE

Dining table 200 × 90 cm (35½" × 78¾")

Design by Sebastian Herkner | Item code: 085065 | Weight 40 kg/89 lbs | Volume 1,35 m³/48 cu ft

Measurements



90
35½

200
78¾

75
29½
cm
inch



Collection: MBRACE by Sebastian Herkner takes a joyfully unconventional approach to poolside furniture, bringing DEDON fiber seating and a solid teak base together for the very first time. The result is an eye-catching, instantly likable collection for lounging, dining and more. MBRACE captures the spirit of barefoot luxury while extending the DEDON design language into new, more Nordic territory.

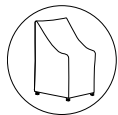
Characteristics: Friendly, engaging, embracing, innovative, handcrafted.

Dining table: With a shape reminiscent of a surfboard, this distinctive dining table of solid, slatted teak is only 90 cm (35½") deep, creating a sense of intimacy and informality that makes it unique.

Frame: This table consists of premium teak.

Maintenance: Clean with a soft cloth and warm water. Wash the teak base using DEDON teak cleaner. To retain the golden-brown color of unweathered teak, we recommend applying DEDON teak oil at least once in every six months.

Additional items



Cover

56085065000

To learn more about DEDON, our collections and warranty policy, please visit our website –

www.dedon.de

10/20

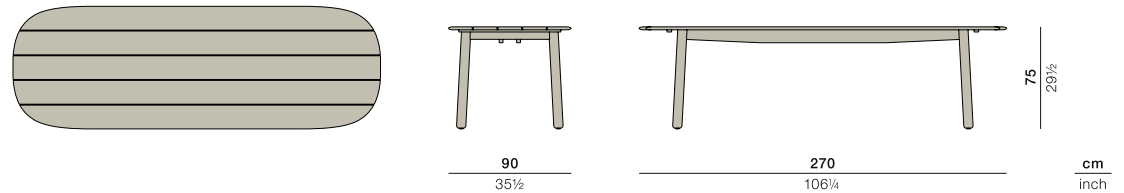
DEDON

MBRACE

Dining table 270 × 90 cm (35½" × 106¼")

Design by **Sebastian Herkner** | Item code: **085055** | Weight **51 kg/113 lbs** | Volume **1,83 m³/65 cu ft**

Measurements



Collection: MBRACE by Sebastian Herkner takes a joyfully unconventional approach to poolside furniture, bringing DEDON fiber seating and a solid teak base together for the very first time. The result is an eye-catching, instantly likable collection for lounging, dining and more. MBRACE captures the spirit of barefoot luxury while extending the DEDON design language into new, more Nordic territory.

Characteristics: Friendly, engaging, embracing, innovative, handcrafted.

Dining table: With a shape reminiscent of a surfboard, this distinctive dining table of solid, slatted teak is only 90 cm (35½") deep, creating a sense of intimacy and informality that makes it unique.

Frame: This table consists of premium teak.

Maintenance: Clean with a soft cloth and warm water. Wash the teak base using DEDON teak cleaner. To retain the golden-brown color of unweathered teak, we recommend applying DEDON teak oil at least once in every six months.

Additional items



Cover

56085055000

To learn more about DEDON, our collections and warranty policy, please visit our website –

www.dedon.de

10/20

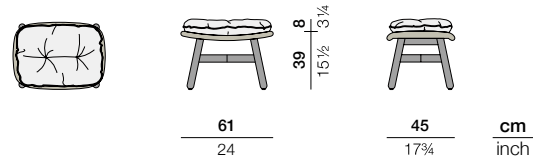
DEDON

MBRACE

Footstool

Design by **Sebastian Herkner** | Item code: **085032** | Weight **3,8 kg/9 lbs** | Volume **0,11 m³/4 cu ft** | COM (Customer Own Material): **0,75 m/1.50 yd** (plain fabric only)

Measurements



Collection: MBRACE by Sebastian Herkner takes a joyfully unconventional approach to poolside furniture, bringing DEDON fiber seating and a solid teak base together for the very first time. The result is an eye-catching, instantly likable collection for lounging, dining and more. MBRACE captures the spirit of barefoot luxury while extending the DEDON design language into new, more Nordic territory.

Characteristics: Friendly, engaging, embracing, innovative, exceptionally comfortable

Footstool: Featuring a triaxial open-weave top and a solid-teak base, the MBRACE footstool goes perfectly with all three chairs in the collection.

Frame: The frame consists of aluminum. The base consists of premium teak.

Finishing: The frame is electrostatic powder-coated in a color similar to that of the fiber. The base consists of natural-finish teak.

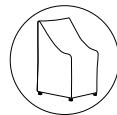
Frame maintenance: Clean with a soft cloth and warm water. Wash the teak base using DEDON teak cleaner. To retain the golden-brown color of unweathered teak, we recommend applying DEDON teak oil at least once in every six months.

Cushion maintenance: While the covers cannot be removed, the complete cushions may be washed by hand at 30 °C / 86 °F.

Fibers



Additional items



Cover

56085032000

Cushions

Cushion: 95085032 + fabric code

Please see fabric options fact sheet

To learn more about DEDON, our collections and warranty policy, please visit our website –

www.dedon.de